

YELLOWSTONE

NATIONAL PARK LODGES

XANTERRA TRAVEL COLLECTION®

EXPERIENCE PLANNER



*A guide to lodging, camping, dining, shopping,
and tours in Yellowstone National Park*



Authorized
Concessioner

Pardon our dust

We thank you for your patience while we improve these great lodges for future generations

As part of our ongoing effort to maintain and improve the many incredible facilities that are under our care, so that they will be here for generations to come, we have a variety of projects scheduled for the Summer 2024 season (April-October). Unfortunately, work like this can only be done during the warmer months as weather permits. We apologize for the inconvenience and thank you for your understanding.

Lake Yellowstone Hotel

Sandpiper Lodge exterior paint project – Painting will occur between 8:00 am and 6:00 pm. Guest Impacts may include: sidewalk closures, safety barriers, workers on ladders, boom lifts outside rooms, necessary entry into rooms for short periods of time, and noise.

Sandpiper Lodge Architectural Barriers Act (ABA) ramp replacement – The potential impact to guests in Sandpiper Lodge and the Lake Hotel Cabins could include parking limitations, temporary closures or rerouting of foot traffic, noise, and workers in the area. The northeast entrance will be closed at times.

Lake Hotel Kitchen Upgrade – Begins mid-August 2024. Kitchen upgrade to include new floor, wall, and ceiling finishes, new equipment, upgraded infrastructure, new fire escape stairs, and exterior paint. The contractor plans to mobilize to the site in mid-August. Guests will notice heavy equipment, job site trailers, and material staging.

The main hotel and food service, including the hotel dining room, are scheduled to close on September 2, 2024, but the cabins and Sandpiper Lodge will remain open. Lake Deli will open for morning coffee service only. Wylie's Canteen at the nearby Lake Lodge will be open for breakfast, lunch, and dinner.

Mammoth Hot Springs Hotel & Cabins

Mammoth Cabin exterior paint project – Exterior painting of the Mammoth Hotel cabins will proceed between 8:00 am and 6:00 pm. Impacts may include: safety barriers, workers on ladders outside rooms, necessary entry into rooms for short periods of time, and noise.

Canyon Lodge

Hayden Lodge/Moran Lodge exterior paint project – Hayden and Moran Lodges' exteriors will be painted this year. Contractor work will be between 8:00 am and 6:00 pm and coordinate with the hotel staff to keep guest informed as to where they will be working. Impacts may include: sidewalk closures, safety barriers, workers on ladders and boom lifts outside rooms, necessary entry into rooms for short periods of time, and noise.

Canyon Mercantile building renovation project – This building, adjacent to the gift shop and dining lodge, will receive major renovation of the building from roof to foundation. Guests can expect the building to be closed, safety barriers in place, sidewalks to be closed, heavy equipment, as well as material deliveries, and noise. This building is not near guest lodging.

Old Faithful Snow Lodge

Snow Lodge roofing and fire system project –

The Snow Lodge will be undergoing a major renovation project in summer 2024 that will include reroofing, fire system upgrade, and an enclosure of the second-floor observation deck. This project will require a diversion of foot traffic to/from the building, use of construction barriers, impacts to parking, equipment staged and in use, and ongoing work that will likely cause noise between 8:00 am and 6:00 pm.



YELLOWSTONE
NATIONAL PARK LODGES
XANTERRA TRAVEL COLLECTION®

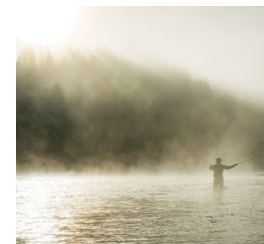
Post Office Box 165
Yellowstone National Park,
WY 82190

Find us on Social:
@YNPLodges
#ynplodges

Reservations:
(307) 344-7311



A WORLD OF UNFORGETTABLE EXPERIENCES®



Contents

Pardon our Dust	2
Welcome to Yellowstone	5
Inspired By Yellowstone Artist Series	7
Our Environmental Efforts	8
Sustainable Travel	9
Camping & Campgrounds	24
Vacation Packages	34
Working in Yellowstone	36
Visiting Yellowstone with Kids	38
Wildlife Watching Secrets	39
Thermal Features	40
Photography Tips	41
Our favorite hikes	42

ADVENTURE TOURS

Tours At-A-Glance	28
Land Tours	29
Water Tours	32
Wild West Tours	33

LOCATION GUIDES

Grant Village	10
Mammoth Hot Springs	12
Yellowstone Lake Village	14
Old Faithful Village	16
Canyon Village	20
Roosevelt Area	22
Services Map	26

Winter *Flip the booklet for winter!*

Winter Lodging, Dining, & Transportation	2a
Winter in Yellowstone	3a
Winter Packages	4a
Cross-Country Ski & Snowshoe	6a
Winter Adventure Tours	8a

Operating dates, hours and levels of service noted in the Experience Planner are subject to change without notice.



Visit us at:
YellowstoneNationalParkLodges.com
for the most up-to-date information.

Please recycle.

Printed on FSC certified
10% post-consumer
waste paper.

Front and back cover photography by Scott Temme.



Visit the Yellowstone Tribal Heritage Center

The Tribal Heritage Center is a space where Indigenous artists, scholars, and presenters, from the associated Tribes of Yellowstone, directly engage Yellowstone visitors through formal and informal demonstrations and discussion.



Open between
May 20 – Oct. 11, 2024



Centrally located in the Old Faithful area. Located between the Old Faithful Lodge and the Old Faithful Visitor Education Center.

The Tribal Heritage Center is a partnership between Yellowstone National Park and Yellowstone Forever.

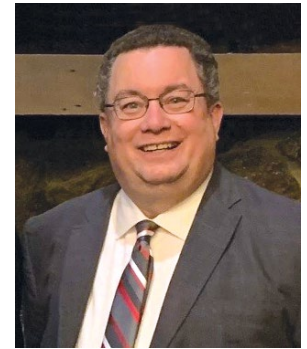


Welcome to Yellowstone!

A Look at Yellowstone Operations Halfway Through Our Contract

It's hard to believe we have passed the half-way point of our current Yellowstone contract but as of November 1, 2023, we're there! Thanks to all those who worked so hard to make it happen.

When we were awarded our current contract in 2013, the National Park Service identified several outdated visitor and employee facilities that needed upgrades or replacements. Xanterra Travel Collection® also identified additional facilities in need of repairs. In total, Xanterra has spent just over \$350 million on these projects over the past 11 years. Here is a summary of the larger projects completed over this time.



*Mike Keller -
Vice President and General Manager,
Yellowstone National Park Lodges
Xanterra Travel Collection®*

Brooks Employee Housing Development - In response to the growing need for full-time employee housing Xanterra purchased and built 13 new housing units.

Gardiner Bunkhouse - Improvements were made to employee apartments including new kitchen equipment, flooring, paint, utilities, and cabinets. In addition, a new roof and fire/sprinkler system was installed.

Mammoth Guest Cabins - 12 employee cabins were renovated and returned to guest units.

Haynes Administration Building (HAB) - The abandoned Hamilton "Christmas" Store in Upper Mammoth, was converted into office space for Xanterra. This allowed us to relocate Reservations, Lodging, and Administrative Offices from the Mammoth Hotel to the HAB. Then the vacated spaces were converted into guest rooms and conference rooms.

Canyon Village Lodging - Removed outdated cabins, installed new infrastructure and built 5 new lodges with a combined total of 409 rooms. This project is the largest LEED certified construction project in a national park.

Canyon Lodge Dining Enhancement - After removing the older outlets we replaced them new outlets that offer more dining options and capacity to serve visitors.

Fishing Bridge RV Park - The Fishing Bridge RV Park underwent a complete renovation of C-Loop with new infrastructure, RV pads and expansion of the guest showers and laundry facility.

Lake Yellowstone Hotel - A complete renovation of the interior of Lake Hotel was completed in 2014. A complete renovation of the kitchen and employee dining room will begin in the fall of 2024 and will be completed by early July of 2025.

New Employee Dorms - One new dorm was built in the Old Faithful Area in 2017 and one new dorm was built in the Lake Area in 2018. Combined, these dorms house over 180 seasonal and full time employees.

Lake Lodge Guest Cabins - Our most recent project, we renovated 66 historic cabins with new foundations, infrastructure, doors, logs, and interior improvements. This project was completed in the fall of 2023.

Lake Lodge Cafeteria - The Lake Lodge Cafeteria, employee dining room, and warehouse were completely refurbished. The new Wylie's Canteen brings a new menu design and improved traffic flow.

Old Faithful Lodge Guest Cabins - With the construction of Paintbrush Dorm, 39 cabins used for employee housing were gutted, refurbished, and turned back into guest cabins.

These projects required extensive support and oversight from many partners including the National Park Service and local contractors. I'm pleased to share we are not finished, either. In the second half of our contract, we plan to make additional renovations to kitchens, guest lodging units, and employee housing. We are committed to meeting the needs of today's visitors and employees while preparing for what lies ahead and will continue to work with partners to anticipate and address what the future might bring. We are grateful to our guests-past, present and future, for their support and patronage as we continue to be the caretakers of these special facilities in the world's first national park!

TAKE A GUIDED TOUR

AND LEAVE THE
DRIVING TO US!



Exhilarating land adventure tours offer a chance to have a knowledgeable guide lead you on a journey of discovery through Yellowstone's diverse ecosystems and geological wonders.

We have full-day and half-day tours departing daily from various locations throughout the park.

We're sure to have a tour for all interests!
Wildlife Tours • Full Park Tours • Geyser & Thermal Tours



Book online, call (307) 344-7311, or speak to the front desk for tour options and availability.
www.yellowstonenationalparklodges.com/adventures

Inspired By Yellowstone Artist Series



To say that Yellowstone has inspired artists is an understatement. In many ways, the park owes its existence to the artists who found inspiration here.

In 1870, Wyoming was a territory and Yellowstone's marvels were a mystery to Congress and most of the U.S. population. Back then — long before selfies, digital images, and Instagram — artists depicted the world's wonders for a curious public. The photographers, illustrators, and painters who portrayed Yellowstone proved instrumental in its establishment as a national park: artist Thomas Moran, and photographers William Henry Jackson and Frank J. Haynes — played a seminal role in Yellowstone's preservation.

These days, Yellowstone inspires artists from all over the world to try to capture the magic of "Wonderland." That's why we carry products from local artists in our gift shops. We regularly seek out locally made or made in the USA items.

Throughout the summer we feature artists across the park in our *Inspired by Yellowstone* artist series. We invite you to experience these incredible artists while they're in the park.

You can learn more about the artists and lineup by stopping by our gift shops at Old Faithful Inn, Old Faithful Lodge, Mammoth Hotel, or Lake Yellowstone Hotel, or by visiting:

YellowstoneNationalParkLodges.com/events



Don't miss our Native American Artist Marketplaces

Mammoth Hot Springs Hotel

June 20 - 23

Lake Yellowstone Hotel

August 15 - 17

Old Faithful Inn

September 19 - 21

Our Environmental Efforts

You are here! Yellowstone covers an area of over 2.2 million acres representing one of the largest nearly-intact ecosystems on Earth. It is an ecological marvel shaped by glaciers, a supervolcano, and the largest concentration of geysers in the world. Yellowstone is an enduring testament to the National Park system, and as a company operating within Yellowstone National Park, we are fully committed to our stewardship role. We make continual strides to soften our ecological footprint through energy efficiency, expanding electric vehicle infrastructure, and composting food waste from our kitchen operations. A few ambitious goals include eliminating single-use plastics in the park by 2030 and targeting net-zero greenhouse gas emissions by 2050.

Acting as a steward for Yellowstone begins with how we as individuals interact within this unique and delicate ecosystem. Seemingly small acts like reducing personal waste, using a refillable water bottle, and recycling when possible can all make a difference. These simple efforts help keep waste out of Yellowstone and soften our impact on the Greater Yellowstone Ecosystem. In doing so, we are improving Yellowstone's resilience to the effects of unpredictable weather events, flooding, forest fires, and increased visitation. Ultimately, ensuring the continued longevity of Yellowstone National Park is the goal. Thank you for being part of this important legacy.

RECYCLING IN YELLOWSTONE

Yellowstone has a storied history concerning the management of the park's trash. Current waste management efforts are drastically different from the days when hundreds of people gathered nightly to watch bears feed on garbage in the park's dumps and enthusiastic visitors fed bears along the roads and behaved recklessly to take photographs.

Today, not only are our efforts centered around ensuring that our waste is protected from the park's wildlife, but we have a keen focus on trying to keep as much waste as possible out of our local landfills. During your stay in Yellowstone, you'll find that you have lots of opportunities to join us in our recycling efforts—be it in our lodges and restaurants, guest rooms, or even at picnic areas and outside spaces where we have wildlife-proof waste sorting stations.

Bins for recycling are located in our guest rooms, lobbies, and public areas. Please help us preserve Yellowstone by sorting your recycling in the appropriate bins.



RECYCLE THESE ITEMS:

Aluminum & Steel
Glass
Plastic (#1 & #2)
Paper
Cardboard

PULLING CARBON OUT OF THE BIG SKY

Did you know that you can feast on sustainably raised beef at Yellowstone National Park Lodges restaurants while simultaneously supporting native grasslands in a first-of-its-kind project in the U.S.? Xanterra Travel Collection® helps four ranches outside the park participate in a 200,000-acre project to improve soil health, provide forage for cattle, and sequester atmospheric carbon dioxide to help reduce the effects of climate change. The project offsets all the emissions from electricity used in our operations while restoring a damaged ecosystem and improving biodiversity. All from regenerative ranching practices.



Sustainable Travel

We're proud of our sustainability efforts. As a visitor, you can help too! Sustainable travel is all about making simple choices to reduce negative impacts on your destination. Here are a few tips:

SOFTEN YOUR STAY.

For the majority of our guest rooms, we automatically enroll you in the **Our Softer Footprint Green Housekeeping Program**, which reduces energy and resource use by forgoing daily linen changes and room cleaning. However, if you prefer daily servicing during your stay, please let us know at check-in and we'll gladly accommodate your request.

BE WATER WISE.

Water from Yellowstone contributes to six unique watersheds, including the Missouri River. To reduce our hotel's impact on Yellowstone's water resources, we installed water-efficient fixtures throughout our operation, including guest rooms, with the goal of reducing our water use by 5% annually.

GIVE THE GIFT OF GREEN.

If you're planning on shopping, consider purchasing environmentally friendly merchandise, items made locally or regionally, from recycled or sustainable materials, and reusable products. We've eliminated plastic bags from our shops and carry a wide range of sustainable products.



CHOW DOWN.

Fresh, local, and sustainable cuisine tastes great and is better for you and the environment. Yellowstone restaurants strive for 70% of food and beverages to be sourced locally (within 500 miles) and sustainably. But it's not just the food that matters: The Mammoth Hotel Dining Room is the first 4-Star Green Restaurant Association-certified restaurant in a National Park.

SLEEP ON IT.

The recently constructed Canyon Lodges have received the U.S. Green Building Council's (USGBC) Leadership in Energy and Environmental Design (LEED) Gold and Silver certifications. They feature recycled and renewable materials, are energy efficient, and use building processes that eliminate waste. They were named one of the 5 Hotels for the Eco-Conscious Traveler by the New York Times.

GET CHARGED UP.

Yellowstone National Park Lodges has multiple options for charging your electric vehicles.



These charging stations are free and available to the public on a first-come first-served basis. Charging stations are available at Mammoth, Old Faithful, Lake, and Canyon.

OPT FOR GREEN TRANSPORTATION.

Conserve fuel by taking one of our guided tours. Our guides are knowledgeable about the park's geology, geography, flora, fauna, and human history, and will help you understand how, in Yellowstone, the only resource is wildness. Avoid idling. Every year in the US, idling cars cost Americans about \$2.9 billion and generate 14.6 million tons of carbon dioxide. If you anticipate being parked for more than 10 seconds, like when stuck in a wildlife jam or construction, turn off your engine to save fuel, reduce emissions, and save money.

PASS ON PLASTIC. Pack a reusable water bottle you can refill at water bottle filling stations available throughout the park. Disposable plastic drink bottles are very hard on the environment, both in terms of their manufacturing process and disposal. We have eliminated all plastic bottled water from our operations in favor of easily recyclable aluminum cans. That helps eliminate 250,000 plastic bottles a year.



Forgot your bottle?

Stop by any lodge gift shop for canned water or a selection of Yellowstone reusable bottles and mugs, the perfect souvenir...and good for the planet.



Fox Lodge at Grant Village

GRANT VILLAGE

LODGING

Grant Village

Open May 31 – October 6

The name honors President Ulysses S. Grant, who established Yellowstone as the world's first national park in 1872. Grant Village offers guest rooms in 6 separate lodge buildings. Single-bedded rooms have a queen bed, and two-bed rooms have full size beds. Location shuttle service available.

Grant Village Campground

Open June 7 - September 8

Located on the southwest shore of Yellowstone Lake, 22 miles north of the South Entrance. Group sites are available. Stores, restaurants, pay showers, and coin laundry are within one mile.



DINING

Grant Village Dining Room

Open May 31 - October 6 • Breakfast, Lunch, Dinner

Buffet style breakfast and à la carte menu are available in the morning. Dinner serves up “fish house” entrees like fish & chips, oysters, and crab cakes. There are also choices for the “land lubber” in the group. **Reservations are required for dinner and can be made at the host desk or by calling 307-242-3499.**



Lake House Restaurant

Open May 31 – October 6 • Dinner

Just a short walk or drive from Grant Village Lodge. Enjoy Baja style tacos and marvel at the waterfront views of Yellowstone Lake.

Seven Stool Saloon

Open May 31 - October 5 • Drinks

Enjoy good conversation, local micro-brews, and Yellowstone signature beverages in the Seven Stool Saloon located inside the Grant Village Dining Room.

Dining operating dates, hours of operation, and levels of service are subject to change without notice.

SHOPPING

Grant Village Gift Shop

Open May 31 – October 6

Located in the registration building, the Grant Village Gift Shop provides an intimate shopping experience and features gifts, souvenirs, and apparel. Our knowledgeable staff is there to help with your shopping needs.

PARK HIGHLIGHT

West Thumb Geyser Basin Trail

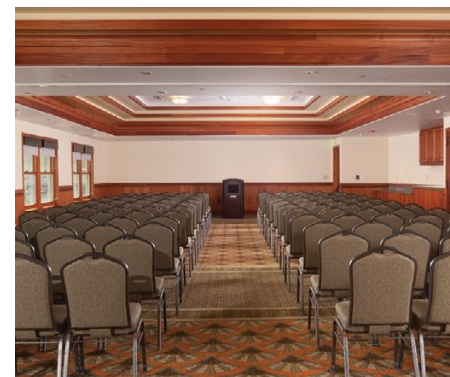
Stroll through the beautiful West Thumb Geyser Basin situated on the shores of Yellowstone Lake. The boardwalk trail is just over a mile long and twists through colorful hot springs and dormant lake shore geysers.

(Located approximately 2 miles north of Grant Village.)



National Park Service Visitor Center

The Grant Village Visitor center offers a stunning view of Yellowstone Lake. Learn about fire ecology and the famous 1988 fire season in its interpretive displays. Check the NPS visitor guide or ask in the visitor center about ranger programs.



MEET, STAY, & PLAY

Yellowstone is a HOT SPOT for meetings, events, and weddings. We offer dedicated meeting and event space at Mammoth Hot Springs Hotel and Old Faithful Snow Lodge.

For more information on our meeting and event capabilities scan the QR code below.



YELLOWSTONE
NATIONAL PARK LODGES
XANTERRA TRAVEL COLLECTION®



Mammoth Hot Springs Hotel at dusk

MAMMOTH HOT SPRINGS

LODGING

Mammoth Hot Springs Hotel & Cabins

Open April 26 - October 14

The Mammoth Hot Springs Hotel was built in 1936, incorporating a wing of rooms from the former National Hotel. Mammoth lodging options include both hotel rooms with bath, and cabins with and without private bathrooms. Four hot tub cabins are also available. The hotel has king and queen beds. Cabins have full beds and queen beds.

DINING

Mammoth Hot Springs Dining Room

Open April 26 - October 14 • Breakfast, Lunch, Dinner

This restaurant sets a high standard for sustainable operations by being the first restaurant in the National Park Service to achieve 4-Star certification from the Green Restaurant Association. Buffet style breakfast and à la carte menu are available in the morning. At lunch try the Parmesan truffle fries with a bison bratwurst. Dinner features a Chop House menu with steaks, chicken, fish, and pasta.

Dining operating dates, hours of operation, and levels of service are subject to change without notice.

Terrace Grill

Open April 26 - October 14 • Lunch, Dinner

Open May 22 - September 4 • Breakfast, Lunch, Dinner

Your quick-service stop for breakfast sandwiches in the morning and burgers, sandwiches, and local hand-dipped ice cream from Big Dipper of Montana the rest of the day.



Terrace Lounge

Open April 26 - October 14

Recount the day's adventures in the cozy atmosphere of our lounge, located just off the Mammoth Dining Room. Here we feature appetizers, locally brewed draught beers, and distilled spirits.

Map Room Bar

Open April 26 - October 14

The corner bar in the Mammoth Map Room serves coffee and alcoholic beverages with live piano music most evenings.

SHOPPING

Yellowstone Gifts at the Mammoth Hotel

Open April 26 - October 14

Located off the lobby of the Mammoth Hotel, this gift shop showcases a wide range of items including handcrafted gifts from the region, jewelry, a range of apparel, toys, souvenirs, and products that showcase our sustainability commitment. Beverages, a selection of snacks, and grab 'n go food options are available. Throughout the summer and winter, meet local artists at our *Inspired by Yellowstone* artist marketplace (see pg. 7) and take home a one-of-a-kind work of art.

PARK HIGHLIGHT

National Park Service Visitor Center

The Albright Visitor Center & Museum and all the red-roofed, many-chimneyed houses were built by the U.S. Cavalry as Fort Yellowstone, an Army post dedicated to protecting the first national park. This beautiful stone visitor center building features exhibits focusing on the ecology of Yellowstone's Northern Range, the development of the National Park idea, and the history of Fort Yellowstone. An orientation area with interactive displays offers enhanced trip planning information. Park Rangers give educational talks and tours throughout the year. Check the NPS visitor guide or ask in the visitor center about ranger programs.

Historic Walking Tour

Did you know that the Mammoth Hot Springs area used to be the headquarters for the U.S. Army when they helped manage the park? Pick up a guide in front of the NPS Visitor Center and take a self-guided walking tour of Mammoth's historic Fort Yellowstone buildings.



Explore the Mammoth Terraces

Drive or walk from the hotel about 1/2 mile to the boardwalks at the base of the Mammoth Terraces and follow them to the thermal pools and views at the top. Or drive to the top and park to explore on foot from there. The Upper Terrace Loop Drive is a short and scenic one-way drive from the parking lot, and is well worth the time.



Mammoth Terraces Boardwalk / NPS



National Historic Landmark - Lake Yellowstone Hotel

YELLOWSTONE LAKE VILLAGE

LODGING

Lake Yellowstone Hotel & Cabins

Open May 10 - October 6*

Upon arrival, the hotel's massive white columns welcome you to a time of classic, yet casual elegance. Among its many accolades, the Lake Hotel is a National Historic Landmark and a Green Seal™ Gold certified hotel. In 2014 a full interior renovation was completed, restoring its Colonial Revival qualities and features throughout the hotel. All hotel rooms have in-room baths (tub/shower combinations). Cabins have showers. Cabins contain double beds, while the hotel rooms and adjacent Sandpiper Lodge rooms have king or queen beds.

*The hotel guest rooms and dining room will close on Sept. 2. The Sandpiper Lodge, cabins, front desk, tours, and gift shop will remain open until October 6.

Bridge Bay Campground

Open May 17 - September 2

Bridge Bay Campground is located near the west shore of Yellowstone Lake adjacent to Bridge Bay Marina, three miles south of Fishing Bridge Junction. Group sites are available. The marina has a store and all your boating and fishing needs. Restaurants and stores are located at Lake Hotel and Lake Lodge, two miles north. Coin laundry and pay showers are located at Grant, Canyon, and Fishing Bridge campgrounds.



Lake Lodge Cabins

Open June 10 - October 6

From here, time is captured in the shimmering reflections of lakeside mountains. Lake Lodge is an inviting location with cozy multiplex cabins. All cabins include private bath; some shower/tub, some shower only. The main building has a front porch overlooking Yellowstone Lake. Almost 200 units with Western cabins having queen beds and Frontier Cabins having full and single beds.

Fishing Bridge RV Park

Open May 10 - October 13

Fishing Bridge RV Park is located near Fishing Bridge Junction in the Yellowstone Lake area. The Fishing Bridge RV Park provides 310 sites (some newly renovated) designated for hard-sided recreational vehicles only. Recreational vehicles with a combined length (RV and tow vehicle) of up to 95 feet can be

accommodated based on the availability of the right-size site. All sites are open, with a mix of pull-through and back-in sites. Electricity (30/50 amp), water, and sewer hookups are provided. Access and Senior Pass discounts are not available at Fishing Bridge RV Park. A service station and general store are nearby. Restaurants, gift shops, and tours are a few miles south in Lake Village.

DINING

Lake Yellowstone Hotel Dining Room

Open May 10 - September 2 • Breakfast, Lunch, Dinner

Nestled within historic Lake Yellowstone Hotel, this French-inspired restaurant boasts an exquisite dinner menu featuring classic dishes such as coq au vin and steak au poivre. Buffet style breakfast and à la carte menu are available in the morning. **Dinner reservations are required and can be made at the host desk or by calling 307-242-3899.**



Lake Hotel Lounge

Open May 10 - September 1 • Drinks

Located in the Sun Room of the Lake Hotel, relax and sip a drink while watching the sunset on the Lake. Enjoy music from a string quartet or piano from mid-June through early August in the Sun Room.

Lake Hotel Deli

Open May 10 - October 6* • Breakfast, Lunch

Quality on-the-go options like baked goods, specialty deli sandwiches, soups, and Starbucks coffee. You have to try the bison pastrami sandwich!

*From September 9th to October 6th, only espresso and coffee service will be available, no food options.

Wiley's Canteen at Lake Lodge

Open June 10 - October 6 • Breakfast, Lunch, Dinner

Breakfast is served à la carte with breakfast sandwiches, baked goods, cereal, and more. American style lunch and dinner fare including the BEST BURGER in the park. These burgers are locally sourced.

Lake Lodge Lounge

Open June 10 - October 5 • Drinks

Wind down from your big day at the Lake Lodge Lounge. On cool evenings, the large fireplace provides a warm and cozy atmosphere.

Dining operating dates, hours of operation, and levels of service are subject to change without notice.

SHOPPING

Lake Yellowstone Hotel Gift Shop

Open May 10 - October 6

Visiting Yellowstone Lake is an incredible experience - and we've brought it indoors. You'll discover that the waters of Yellowstone dictate the theme with a wide array of gifts promoting the lake lifestyle. Offering collectibles, carvings, Native American jewelry, distinctive regional products, as well as a great selection of quality apparel and souvenirs. Throughout the summer, meet local artists and authors at our **Inspired by Yellowstone** artist marketplace (see pg. 7) and take home a one-of-a-kind gift or work of art.

Lake Lodge Gift Shop

Open June 10 - October 6

Located in the lobby of Lake Lodge, this location offers a selection of outdoor apparel, headwear, and gear, as well as souvenir clothing, children's wear, toys, and gifts.

PARK HIGHLIGHT

National Park Service Visitor Center

The Fishing Bridge Visitor Center and Museum is one mile east of Fishing Bridge Junction on the East Entrance Road. The visitor center and museum highlight the ecology of Yellowstone Lake, focusing on birds.





Old Faithful Inn and Old Faithful Geyser

OLD FAITHFUL VILLAGE

LODGING

Old Faithful Inn

Open May 3 - October 14

As an inspiration for rustic national park architecture, and as one of the most famous buildings in the National Park System, the Old Faithful Inn features a 76-foot tall lobby, a huge rough stone fireplace, overhanging balconies, and railings made of spectacular twisted gnarled logs. The Old Faithful Inn offers accommodations ranging from rustic historic rooms (with and without private bathrooms) to suites, all with queen beds.



Old Faithful Lodge Cabins

Open May 10 - October 6

The dining and lobby areas in Old Faithful Lodge offer fantastic views of Old Faithful Geyser and the surrounding geyser basin.

Cabins are located behind the main lodge building. While some cabins have private bathrooms with a shower, others have a sink only with public showers/bathrooms nearby. Cabins have double and/or single beds.



Old Faithful Snow Lodge & Cabins

Open April 26 - October 27

Recognized with the Cody Award for Western Design, the Snow Lodge features heavy timber construction, hand-wrought iron accents, specially designed furnishings and unique lighting fixtures. Old Faithful Snow Lodge has both lodge rooms and cabins, all with private bathrooms.

DINING



Old Faithful Inn Dining Room

Open May 3 - October 14 • Breakfast, Lunch, Dinner

The dining room at the Old Faithful Inn is a grand and rustic space. Buffet style breakfast and à la carte menu are available in the morning. For a quick lunch try the Western buffet. The dinner buffet features beef brisket, fish, and chicken skewers or choose an à la carte dinner item like prime rib, fish du jour or pork osso buco. **Dinner reservations are required and can be made at the host desk or by calling 307-545-4999.**

Bear Paw Deli at Old Faithful Inn

Open May 3 - October 14 • Grab-n-go

Enjoy espresso, specialty to-go sandwiches, salads, and snacks. Indulge in hand-dipped local ice cream from Big Dipper of Montana from June 2 to Sept. 24.

Bear Pit Lounge at Old Faithful Inn

Open May 3 - October 13 • Drinks, Appetizers

After a long day in the park, retire to the Bear Pit for drinks, appetizers, burgers, and wings.

Mezzanine Espresso Cart and Bar

Open May 3 - October 13

Located upstairs on the 2nd floor mezzanine of the Inn. Grab a drink and head to the porch for a geyser eruption.

Old Faithful Lodge Cafeteria

Open May 10 - October 6 • Lunch, Dinner

The only dining room with a view of Old Faithful Geyser! Featuring barbeque, gyros, hot dogs, and an Indian station. There is surely something to please a variety of appetites.

Old Faithful Lodge Bake Shop and Ice Cream

Open May 10 - October 6 • Grab & Go

Breakfast sandwiches, muffins, espresso, and more for the morning rush. Come back for an afternoon treat of ice cream!

Obsidian Dining Room at Snow Lodge

Open April 26 - October 27 • Breakfast, Dinner

Buffet style breakfast and à la carte menu are available in the morning. Make dinner WILD with a selection of game dishes like bison, boar, and duck.

Geyser Grill at Snow Lodge

Open April 26 - October 31 • Lunch, Dinner

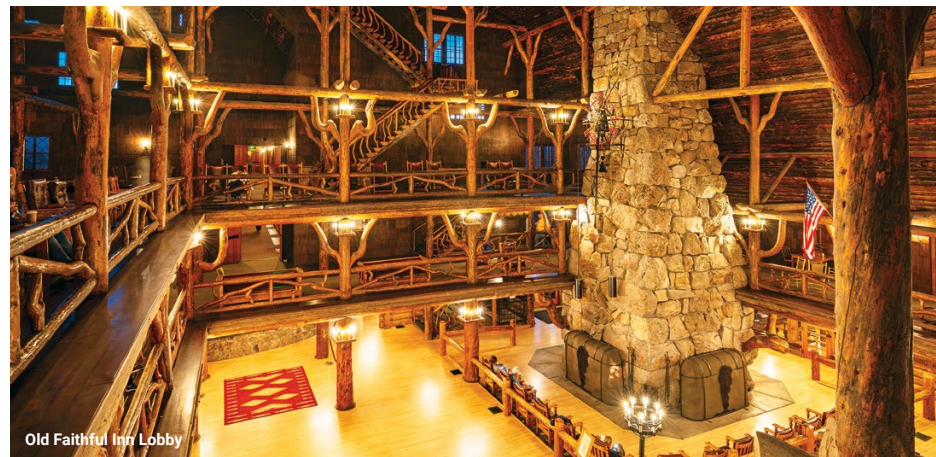
Need a quick bite before heading back out to the geyser basin? The Geyser Grill serves cheesesteak sandwiches and snacks.

Firehole Lounge at Snow Lodge

Open April 26 - October 26 • Drinks, Appetizers

Serving local beers, signature cocktails, and appetizers. Look for the bears hidden in the stones of the fireplace!

Dining operating dates, hours of operation, and levels of service are subject to change without notice.



Old Faithful Inn Lobby

SHOPPING

Old Faithful Inn Gift Shop

Open May 3 - October 14

The historic Old Faithful Inn Gift Shop transports you back in time, featuring a wide selection of memorable gifts. You can choose from our collection of exclusive keepsakes and fine apparel. The acclaimed Inn Gallery is devoted to regional artwork and collectibles as well as exquisite Native American jewelry, drums, fetishes, carvings, and an outstanding array of artifacts. Throughout the summer, meet local artists and authors at our **Inspired by Yellowstone** artist marketplace (see pg. 7) and take home a one-of-a-kind gift or artwork.

Old Faithful Lodge Gift Shop

Open May 10 - October 6

Discover Yellowstone and its wonders through the many themed items you'll find at the Old Faithful Lodge Gift Shop, our premier geyser basin store. Throughout the summer, meet local artists and authors at our **Inspired by Yellowstone Artist** marketplace (see pg. 7) and take home a one-of-a-kind gift or work of art. Gifts, fun souvenirs, and apparel for the entire family await you at your #1 stop to "Discover Yellowstone." We also offer grab 'n go ice cream novelties, beverages, snacks, and sandwiches.



Bear Den Gift Shop at Snow Lodge

Open April 26 - October 27

Our Bear Den features an enticing collection of bear and wildlife-themed treasures. We also showcase products that explore the unique beauty of winter in Yellowstone. After all, the Snow Lodge is our premier winter location. As winter fades and spring approaches, the ski shop offers rental bikes for in-park excursions. You'll discover a large selection of regional gifts, apparel, guidebooks and media, and local specialty gourmet treats.

Fireside Convenience Store at Snow Lodge

Open April 26 - October 27

Open 24 hours, with a variety of snacks, candy, sandwiches, ice cream, beverages, as well as sundries, books, and a limited assortment of souvenir items.



Tribal Heritage Center/NPS



Fountain Paint Pot Trail

PARK HIGHLIGHTS

National Park Service Visitor Center

The Old Faithful Visitor Education Center, which opened in 2010, contains exciting interactive exhibits explaining Yellowstone's rare thermal features and a Young Scientist room for visitors of all ages. The theater features frequent showings of park videos. Stop at the Visitor Education Center for the next prediction for Old Faithful and a few other geysers or call 307-344-2751.

Upper Geyser Basin Walk

Starting at the Old Faithful Inn and the National Park Service Visitor Center you'll find a network of paved paths and boardwalks that wind through the highest concentration of geysers in the world. Predictable geysers in this area include Old Faithful, Castle, Grand, Daisy, and Riverside. The full loop is 3 miles but shorter distances can be achieved depending on the route you choose.

Tribal Heritage Center

The Yellowstone Tribal Heritage Center is a space where indigenous artists, scholars and presenters from the 27 associated Tribes of Yellowstone National Park directly engage with visitors through demonstrations and discussions.

Fountain Paint Pot Trail

North of Old Faithful Village along the Grand Loop Road you will find the parking lot for Fountain Paint Pot Trail. This 0.6 mile boardwalk leads through an area with all four types of geothermal features, geysers, steam vents, mud pots and hot springs.

Old Faithful Inn Walking Tour

Come and learn the fascinating history and unique qualities of this National Historic Landmark. This FREE TOUR departs the Old Faithful Inn Lobby at 9:30 am, 11:00 am, 2:00 pm, and 3:30 pm daily from May 4 through October 13.





Washburn Lodge at Canyon Lodge

CANYON VILLAGE

LODGING

Canyon Lodge & Cabins

Open May 17 - October 27

If location is everything, this is a great central base for your park explorations. Canyon Lodge offers a mix of accommodation types, from Western Cabins to a range of lodge rooms. In 2016, five new sustainably built lodges were completed and opened to the public, all with LEED (Leadership in Energy and Environmental Design) certification. All guest lodging has private bathrooms. Most bathrooms have a tub/shower combination, while some have showers only. Bedding ranges from full size to king beds. Location shuttle service available.

Canyon Campground

Open May 31 - September 15

Centrally located near the Grand Canyon of the Yellowstone. Showers and coin laundry are located on-site. Restaurants and stores are located nearby at Canyon Village.

DINING

Canyon Lodge Eatery

Open May 17 - October 27 • Breakfast, Lunch, Dinner
Breakfast is served à la carte with combo breakfast plates or grab and go muffins, cereal

and oatmeal. For lunch try an Asian inspired fresh bowl or a bison pastrami sandwich. At dinner enjoy rotisserie chicken, roasted trout or a braised portabella mushroom. Feeling thirsty? Grab a Rainforest Alliance coffee, Naked Juice, or cold kombucha.



The Falls Cafe

Open May 17 - September 2 • Grab-n-go

Get your breakfast sandwich in the morning with a selection of coffee drinks. The rest of the day features flatbreads, sandwiches, espresso, and snacks. Also available, draught beer and wine on tap available after 11:00 am.

M66 Lounge

Open May 17 - October 26 • Appetizers & Drinks

Take a break from the action with a refreshing drink and an appetizer in the M66 Lounge, adjacent to the Canyon Lodge Eatery.

The Ice Creamery

Open May 17 - September 11

Regardless of how good your day has been, we can help you make it even better with Montana-made ice cream from Big Dipper.

Washburn Lookout

Open May 17 - October 14 • Coffee Bar, Sandwiches

Conveniently located in the Washburn Lodge (registration building), the Washburn Lookout offers specialty coffee, hot and cold sandwiches, and snacks 24 hours a day.

Dining operating dates, hours of operation, and levels of service are subject to change without notice.



SHOPPING

Canyon Lodge Gift Store

Open May 17 - October 27

This gift shop provides a broad array of apparel, gifts, and remembrances of the Grand Canyon of the Yellowstone and the Lower Falls. Our focus in this location is the remarkable geology of the area, so please come browse through our books, rocks, and specimens.

Canyon Mercantile

Open May 31 - October 27

For the adventure enthusiast, hiker, and nature lover, visit our store to see our selection of local and regional active wear, as well as national brands. Feeling hungry? Pick up a grab 'n go item including sandwiches, snacks, beverages, and frozen ice cream.

PARK HIGHLIGHTS

National Park Service Visitor Center

The Canyon Visitor Education Center features interpretive exhibits related to the Yellowstone supervolcano. Through interactive exhibits, animations, audio-visuals, and real-time scientific data you will gain an understanding about how Yellowstone's volcano, geysers, hot springs, and geologic history affects life here.

Drive The Rim Roads

Drive the North and South Rim roads of the Grand Canyon of the Yellowstone near Canyon Village. Designated overlooks along the way offer breathtaking views of the Grand Canyon of the Yellowstone River and the Upper and Lower Falls of the Yellowstone River. A number of trails and walkways wind along the rims and partway into the canyon.



View from Artist Point Overlook Trail



ROOSEVELT AREA

LODGING

Roosevelt Lodge Cabins

Open June 7 - September 2

In 2020, Roosevelt Lodge celebrated its 100th Anniversary! From the front porch of the lodge, you can rock your stress to sleep and awaken your Old West spirit. Roosevelt Lodge features rustic cabins. All of the 80 cabins have double beds. Most are without private bath and are heated with wood stoves, while some have electric heat and private bathroom with shower.



SHOPPING

Roosevelt Mercantile

Open June 7 - September 2

Offering a selection of grab 'n go items including sandwiches, snacks, beverages, and frozen ice cream. Grab a souvenir to remember your Western adventure from our curated selection of apparel and gifts.

DINING

Roosevelt Lodge Dining Room

Open June 7 - September 2 • Breakfast, Lunch, Dinner

Food fit for a cowboy! Breakfast is served a la carte. Lunch and dinner feature the best of the west with bison chili, bison and local beef burgers, our signature barbeque babyback ribs, and Roosevelt baked beans.

Roosevelt Lodge Lounge

Open June 7 - September 1 • Drinks

Enjoy good conversation and Yellowstone signature beverages from the bar, located inside the Lodge. Sample locally distilled whiskey while you rock your evening away on the Lodge's front porch.

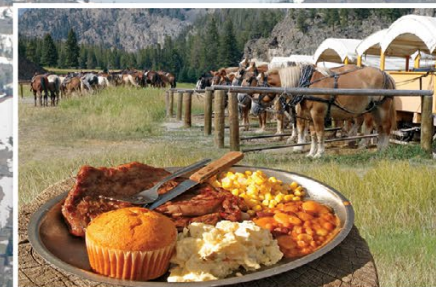
Old West Dinner Cookout

Open June 8 - September 8 • Meal & Tour

Grab the saddles and hitch up the wagon. Enjoy the cookout and an evening you won't soon forget. Our cooks are dishin' up some real cowboy grub like sizzling steaks, our famous Roosevelt baked beans, corn muffins, and more. It's all served up with music, storytelling, wranglers, horses, and wagons. **Reserve in advance. See page 33 for more details.**

Dining operating dates, hours of operation, and levels of service are subject to change without notice.

Make memories with a Yellowstone WESTERN ADVENTURE



Experience Yellowstone the way the first pioneers did with a unique western adventure.

Book online, call 307-344-7311, or speak to the front desk for tour availability.

All Western Adventure Tours leave from the Roosevelt Lodge Corral.

HORSEBACK RIDES

STAGECOACH ADVENTURE

OLD WEST DINNER COOKOUT



Camping & Campgrounds

CAMPGROUND 2024 Operating Schedule	NIGHTLY RATE Not including taxes and fees.	MAX LENGTH	FLUSH TOILETS	DUMP STATION**	RATE INCLUDES 2 SHOWERS***	PAY SHOWERS	AMPHITHEATER	COIN LAUNDRY	FIREWOOD SOLD	FULL HOOKUP
BRIDGE BAY CAMPGROUND May 17 - September 2 <i>*Early Season: May 17 - May 23</i>	\$36	40 ft	●	●			●		●	
CANYON CAMPGROUND May 31 - September 15 <i>*Early Season: May 31 - June 6</i>	\$42	40 ft	●	●	●	●	●	●	●	
FISHING BRIDGE RV PARK May 10 - October 13	\$92/\$103	95 ft	●	●	●	●	●	●		●
GRANT VILLAGE CAMPGROUND June 7 - September 8 <i>*Early Season: June 7 - June 13</i>	\$42	50 ft	●	●	●	●	●	●	●	
MADISON CAMPGROUND May 3 - October 20	\$36	40 ft	●	●			●		●	

* Early season dates are first come, first served.

** Spring and fall can bring freezing temperatures that will result in dump station closures.

*** Rate includes 2 showers per night. Showers are not included in group campsite rates.

CAMPGROUND INFORMATION

All campgrounds operated by Yellowstone National Park Lodges have recycling and refuse containers nearby. Coin-operated ice and soda machines are located throughout the park.

RV SITES

Sites that accommodate RVs at Canyon, Bridge Bay, Grant Village, and Madison campgrounds are either pull-through or back-in with limited width for slide-outs and MAY NOT BE LEVEL; please plan accordingly. Some sites are shaded while others are in open areas.

CHECK-IN (OUT) AND CAMPSITE ASSIGNMENT

At all campgrounds, check-in time is 1:00 pm and check-out time is 11:00 am. Campsites are assigned at check-in. Accessible sites are available.

FOOD STORAGE

Food storage regulations are strictly enforced at all campgrounds. Food odors attract bears. Any items containing food residues and scents MUST NOT be left outside or in tents/ tent trailers at any time. Food must be stored in bear-proof lockers located throughout the campground or in a hard-sided vehicle.

PICNIC TABLES AND FIRE GRATES

Individual campsites have one picnic table and one fire grate (except at Fishing Bridge RV Park which has no fire grates and only has picnic tables in Loop E). Group campsites have one picnic table and one fire grate for approximately every six people and are for tent camping only.

Madison Campground

Located 16 miles north of Old Faithful at the confluence of the Gibbon and Firehole Rivers, which creates the Madison River. Restaurants, pay showers, and stores are located at Old Faithful. For all your camping necessities we carry a selection of snacks, treats, and fixings for s'mores in our Madison Mercantile. Stop by for your convenience items, as well as souvenirs and apparel for the family.

Bridge Bay Campground

Located near the west shore of Yellowstone Lake adjacent to Bridge Bay Marina, three miles south of Fishing Bridge Junction. Group sites are available. Store, boat rental, dock rental, boat launch, guided fishing trips, and guided boat tours available. Restaurants and stores are located at Lake Hotel and Lake Lodge, two miles north. Coin laundry and pay showers are located at Grant, Canyon, and Fishing Bridge RV park campgrounds.



Canyon Campground

Centrally located near the Grand Canyon of the Yellowstone. Showers and coin laundry are located on-site. Restaurants and stores are located nearby at Canyon Village.

Grant Village Campground

Located on the southwest shore of Yellowstone Lake, 22 miles north of the South Entrance. Group sites are available. Stores, restaurants, pay showers, and coin laundry are within one mile.



Fishing Bridge RV Park

Located near Fishing Bridge Junction in the Yellowstone Lake area. The Fishing Bridge RV Park provides 310 sites (some newly renovated) designated for hard-sided recreational vehicles only. Recreational vehicles with a combined length (RV and tow vehicle) of up to 95 feet can be accommodated based on the availability of the right-sized site. All sites are open, with a mix of pull-through and back-in sites. Electricity (30/50 amp), water, and sewer hookups are provided. Access and Senior Pass discounts are not available at Fishing Bridge RV Park. A service station and general store are nearby. Restaurants and gift shops are a few miles south in Lake Village. Several tours can be taken from this location. The RV Park registration building has showers, laundry facilities, camping and RV supplies, souvenirs, ice cream treats, and snacks.

BE BEAR AWARE

- **Keep a clean camp!** Improperly stored or unattended food will be confiscated and you could be fined.
- Treat **odorous products** such as soap, toothpaste, fuel products, suntan lotion, and bug spray in the same manner as food.
- **Never store food, garbage, or toiletries** in tents or sleeping bags.
- Place all trash in **bear-resistant garbage dumpsters**.
- **Pets** must be kept under physical restraint and never left unattended.
- **Immediately report careless campers and all bear sightings** to the campground registration building or nearest Park Ranger.

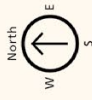
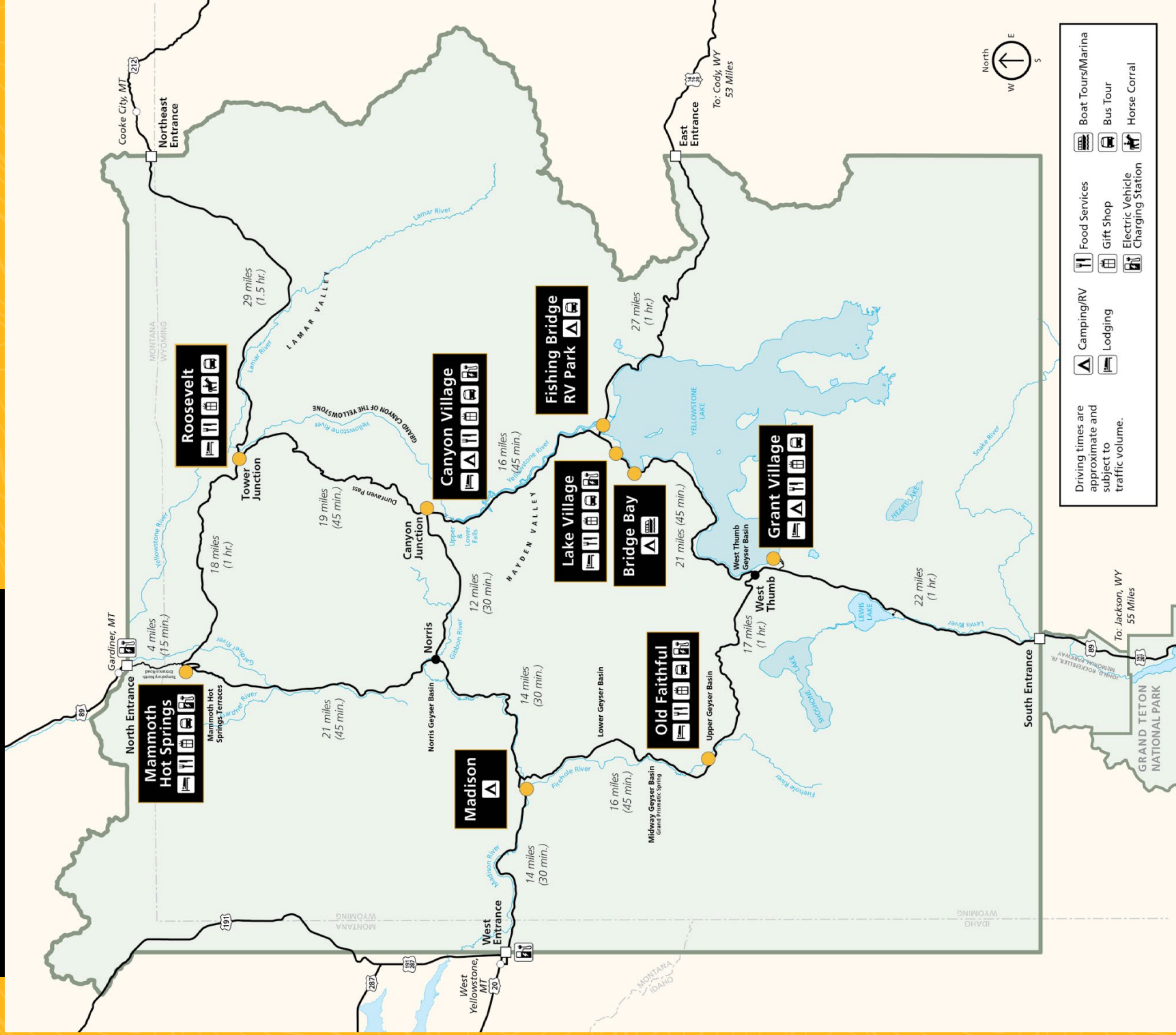


YELLOWSTONE

NATIONAL PARK LODGES
XANTERRA TRAVEL COLLECTION®

Services Map

Visit us at:
YellowstoneNationalParkLodges.com
for the most up-to-date information.



Driving times are approximate and subject to traffic volume.

- Camping/RV
- Lodging
- Food Services
- Gift Shop
- Electric Vehicle Charging Station
- Boat Tours/Marina
- Bus Tour
- Horse Corral

2024 ADVENTURE TOUR GUIDE

Tours depart from marked locations.

	Mammoth	Roosevelt	Canyon	Lake Hotel	Old Faithful	Bridge Bay Marina	Fishing Bridge RV	Grant Village	Full Day Tour	Half Day Tour	Hourly*
LAND ADVENTURE TOURS											
CIRCLE OF FIRE			●	●	●		●	●	●		
EVENING WILDLIFE ENCOUNTERS	●		●								●
FIREHOLE BASIN ADVENTURE 🚌					●						●
GEYSER GAZERS 🚌					●						●
PICTURE PERFECT PHOTO SAFARI 🚌				●	●						●
TWILIGHT ON THE FIREHOLE 🚌					●						●
WAKE UP TO WILDLIFE	●	●	●								●
YELLOWSTONE IN A DAY	●				●				●		
LAKE BUTTE SUNSET TOUR 🚌				●			●				●
BICYCLE RENTALS					●				●	●	●
WILD WEST ADVENTURE TOURS											
OLD WEST DINNER COOKOUT <i>Travel by horseback or by wagon ride</i>		●									●
SADDLE UP (Horseback Ride)		●									●
STAGECOACH ADVENTURE		●									●
WATER ADVENTURE TOURS											
YELLOWSTONE LAKE SCENICRUISE						●					●
DOCK SLIP RENTAL						●					
FISHING GUIDE or SIGHTSEEING CHARTER (PRIVATE)						●					●
RENTAL BOATS						●					●
SHUTTLE BOAT SERVICE						●					●

Let our knowledgeable guides show you the wonders of Yellowstone. Whether you have a full day, half day or just an hour we have a tour for you. Scan the QR code to view tour details online. Tours can be booked online, by calling (307) 344-7311 or at the front desk of any lodge.

All adventures are offered daily with the exception of the Firehole Basin Adventure. **Only tours with a 🚌 travel by Historic Yellow Buses.**

*Includes one and two hour tours as well as hourly rentals, some with 2 hour minimums



LAND ADVENTURE TOURS

Tours with a 🚌 after their name travel by Historic Yellow Buses.

Circle of Fire

This is the Park's signature tour, being offered for decades longer than any other. Your driver-guide will pack the day with all they can, including Old Faithful Geyser, Yellowstone Lake, Hayden Valley, the Upper and Lower Falls of the Grand Canyon of the Yellowstone, and the Fountain Paint Pot Trail.

Rates: Adult \$113, Child (3-11) \$56.50

Departs: Grant Village Registration Building

Tour Dates & Times:

June 1 - Oct. 5 / 9:15 am to 6:30 pm

Departs: Lake Yellowstone Hotel

Tour Dates & Times:

May 18 - Oct. 5 / 9:45 am to 6:30 pm

Departs: Fishing Bridge RV Park

Tour Dates & Times:

May 18 - Oct. 5 / 9:30 am to 6:15 pm

Departs: Old Faithful Inn

Tour Dates & Times:

May 18 - Oct. 5 / 8:15 am to 4:30 pm

Departs: Canyon - Washburn Lodge

Tour Dates & Times:

May 18 - Oct. 26 / 7:45 am to 4:15 pm

Yellowstone in a Day

A great overview of the park! Recommended as a "best first activity" by many of our guests. We'll show you the park highlights, including Old Faithful, Yellowstone Lake, the Grand Canyon of the Yellowstone, Mammoth Hot Springs, and more.

Departs: Gardiner, Montana*

Available: May 25 - Oct. 5

Rates: Adult \$170, Child (3-11) \$85

Tour Time: 7:30 am - 6:30 pm

*Park entrance fee is not included

Departs: Mammoth Hotel

Available: May 25 - Oct. 5

Rates: Adult \$159, Child (3-11) \$79.50

Tour Time: 8:00 am - 6:00 pm

Departs: Old Faithful Inn

Available: May 25 - Oct. 5

Rates: Adult \$159, Child (3-11) \$79.50

Tour Time: 7:45 am - 5:30 pm

Wake up to Wildlife

The early morning hours and Lamar Valley's broad vistas provide great opportunities to spot wildlife grazing or hunting on the open hillsides. If the wildlife is lying low, the spectacular scenery is sure to please. A muffin and juice are provided.

Rates: Adult \$121, Child (3-11) \$60.50

Departs: Mammoth Hotel

Tour Dates & Times:

May 18 - July 31 / 6:15 am to 11:30 am

Aug. 1 - Aug. 31 / 6:30 am to 11:45 am

Sept. 1 - Sept. 14 / 6:45 am to 12:00 pm

Sept. 15 - Oct. 5 / 7:00 am to 12:15 pm

Departs: Canyon - Washburn Lodge

Tour Dates & Times:

May 25 - July 31 / 6:15 am to 11:30 am

Aug. 1 - Aug. 31 / 6:30 am to 11:45 am

Sept. 1 - Sept. 14 / 6:45 am to 12:00 pm

Sept. 15 - Oct. 5 / 7:00 am to 12:15 pm

Departs: Roosevelt Lodge

Tour Dates & Times:

June 8 - July 31 / 7:00 am to 11:00 am

Aug. 1 - Aug. 31 / 7:15 am to 11:15 am

September 1 / 7:30 am to 11:30 am



Evening Wildlife Encounters

Spend an evening in the great meadows of Yellowstone National Park. Our guides keep themselves informed as to where wildlife is frequenting, but as the animals roam where they wish, there is always an element of chance involved. In any case, you'll get to enjoy twilight in the park.

Rates: Adult \$89, Child (3-11) \$44.50

Departs: Mammoth Hotel

Tour Dates & Times:

May 18 - July 31 / 4:15 pm to 8:30 pm

Aug. 1 - Aug. 31 / 3:45 pm to 8:00 pm

Sept. 1 - Sept. 14 / 3:30 pm to 7:45 pm

Sept. 15 - Oct. 5 / 3:15 pm to 7:30 pm

Departs: Canyon - Washburn Lodge

Tour Dates & Times:

May 24 - July 31 / 4:15 pm to 8:30 pm

August 1 - August 31 / 3:45 pm to 8:00 pm

Sept. 1 - Sept. 14 / 3:30 pm to 7:45 pm

Sept. 15 - Oct. 5 / 3:15 pm to 7:30 pm



Tour buses waiting for guests at Old Faithful Inn

Geyser Gazers ☺

Join us for a 1.5-hour adventure in the Fire Hole, a name bestowed by mountain men of the early 19th century. Enjoy expansive views from the historic Yellow Bus (top down if the weather's nice) and take in the sights at one or more geyser basins, with perhaps a side trip to Kepler Cascades if the group so desires.

Departs: Old Faithful Inn
Rates: Adult \$37, Child (3-11) \$18.50
Tour Available: May 18 - August 31
Tour Time: 4:15 pm to 6:00 pm

Lake Butte Sunset Tour ☺

Enjoy the scenic shores of Yellowstone Lake and breathtaking views from the Lake Butte Overlook in one of our historic Yellow Buses. It's a ride through history and nature, as tales from the past are interwoven with sights of the present. Please dress warmly since this tour leaves later in the evening.

Rates: Adult \$51, Child (3-11) \$25.50
Departs: Lake Yellowstone Hotel
Tour Dates & Times:
 May 18 - July 31 / 7:15 pm to 9:30 pm
 August 1 - August 14 / 7:00 pm to 9:15 pm
 August 15 - August 31 / 6:30 pm to 8:45 pm
 Sept. 1 - Sept. 14 / 6:00 pm to 8:15 pm
 Sept. 15 - Oct. 5 / 5:30 pm to 7:45 pm

Departs: Fishing Bridge RV Park
Tour Dates & Times:
 May 18 - July 31 / 7:25 pm to 9:20 pm
 August 1 - August 14 / 7:10 pm to 9:05 pm
 August 15 - August 31 / 6:40 pm to 8:35 pm
 Sept. 1 - Sept. 14 / 6:10 pm to 8:05 pm
 Sept. 15 - Oct. 5 / 5:40 pm to 7:35 pm

Picture Perfect Photo Safari ☺

From early morning bison and elk whose breath condenses on the cool air, to the sun shining through the vapor clouds above thermal streams, Yellowstone National Park is a paradise for shutterbugs. Your host, a driver-guide who is also a professional photographer, will tailor the tour to the interests, skill levels, and equipment of the group to create a day of memorable photographs for all. One of our safaris originates from Old Faithful Inn, and takes in thermal areas and wildlife north of Old Faithful Village; the other departs Lake Yellowstone Hotel to visit wildlife-rich Hayden Valley and the Grand Canyon of the Yellowstone. Please dress warmly as tours leave early in the morning. A muffin and juice are provided.

Rates: Adult \$122, Child (11 and under) \$61
Departs: Lake Yellowstone Hotel
Tour Dates & Times:
 May 18 - July 31 / 5:45 am to 11:00 am
 August 1 - August 31 / 6:00 am to 11:15 am
 Sept. 1 - Sept. 14 / 6:15 am to 11:30 am
 Sept. 15 - Oct. 5 / 6:30 am to 11:45 am

Departs: Old Faithful Inn
Tour Dates & Times:
 May 18 - July 31 / 5:45 am to 11:00 am
 August 1 - August 31 / 6:00 am to 11:15 am
 Sept. 1 - Sept. 14 / 6:15 am to 11:30 am
 Sept. 15 - Oct. 5 / 6:30 am to 11:45 am



Twilight on the Firehole ☺

The Firehole (or Fire Hole) was named by the mountain men of the 19th century. What they experienced then still inspires visitors today. Exploring the Firehole area during the later part of the day is especially appealing as evening is a "golden hour" in Yellowstone. Later daylight adds a dramatic hue to the landscape and wildlife tends to be more active during the evening hours.

Departs: Old Faithful Inn
Rates: Adult \$50, Child (3-11) \$25
Tour Dates & Times:
 May 11 - July 31 / 6:45 pm to 9:00 pm
 August 1 - August 31 / 6:30 pm to 8:45 pm
 Sept. 1 - Sept. 14 / 6:00 pm to 8:15 pm
 Sept. 15 - Sept. 30 / 5:30 pm to 7:45 pm
 Oct 1 - Oct. 12 / 5:00 pm to 7:15 pm

Firehole Basin Adventure ☺

This three-hour exploration in a historic Yellow Bus will take you to where the action is "steamulating." Your guide will leave you with a new appreciation and understanding of Yellowstone's underground geothermal plumbing.

Departs: Old Faithful Inn
Rates: Adult \$73, Child (3-11) \$36.50
Tour Time: 12:45 pm to 4:00 pm
Tour Dates:
 May 11 - June 12 / Daily
 June 14 - Sept. 6 / Daily except Thursday
 Sept. 6 to October 12 / Daily



Firehole River/NPS

Rent a Bicycle

Go for a bike ride down to Morning Glory Pool or to Lone Star Geysers. Our bike shop staff can provide you with expert guidance to help you plan a route to fit your ability. All bikes are rented on a first-come, first-served basis. Bike rentals are weather dependent, call 307-545-4825 for current rental information.

Location: Old Faithful Snow Lodge Gift Shop
Dates: Memorial Day to Labor Day
Rates: 1-hour / 4-hours / 8-hours:
 Adult Bike - \$15 / \$30 / \$40
 Child Bike - \$10 / \$20 / \$30
 Bike Train - \$7 / \$14 / \$20
 Trailer - \$7 / \$14 / \$20

Old Faithful Inn Walking Tour

Come and learn the fascinating history and unique qualities of this National Historic Landmark.

Departs: Old Faithful Inn Lobby
Rates: Free
Tour Available: May 4 - October 13
Tour Times: 9:30 am, 11:00 am, 2:00 pm, and 3:30 pm

Lake Yellowstone Hotel Walking Tour

Opening its doors for the first time for the 1891 summer season, today no hotel has stood in any national park longer than the Lake Yellowstone Hotel. If you'd like to learn more about the history, the hardships, and the idiosyncrasies of the *Grand Old Lady of the Lake*, come along with our guide on the afternoon walking tour of Lake Hotel.

Departs: Lake Yellowstone Hotel Lobby
Rates: Free
Tour Available: May 11 - Sept. 1
Tour Time: Starts at 4:45 pm daily

WATER ADVENTURE TOURS

Yellowstone Lake Scenicruise

Come aboard the *MV Lake Queen II* for a one-hour guided tour of the largest freshwater lake above 7,000 feet in the U.S. While cruising, you'll be watching for eagles, shorebirds, and the occasional elk and bison sighting on the shoreline.

Departs: Bridge Bay Marina

Rates: Adult \$21, Child (3-11) \$12.50

Tour Available: June 14 - Sept. 8

Tour Length: One hour

Tour Times: 9:00 am, 10:30 am, 1:00 pm, 2:30 pm, 4:00 pm, 5:30 pm (ends 9/2), 7:00 pm (ends 8/5)



Boat Rentals from Bridge Bay Marina

Rent a 40 hp/18 ft. motorboat for exploring the northern end of the lake. Rentals for this activity are on a walk-up basis only. The minimum rental time is one hour. Children must be 2 years of age to participate. No pets allowed. 1-6 persons per boat.

Departs: Bridge Bay Marina

Rates: \$68 per hour

Available: June 14 - Aug. 5 (8:00 am - 5:30 pm/return by 7:00 pm), August 6 - Sept. 8 (9:00 am - 4:00 pm/return by 5:30 pm)

Backcountry Shuttle Boat

Our Backcountry Shuttle Service is a private service that can carry up to 6 people, gear, and canoes to backcountry drop-off locations and campsites on Yellowstone Lake. Venture to one of the most remote locations in the lower 48 states while backpacking, hiking, camping, or boating. Drop-off points include: Eagle Bay, Wolf Bay, Plover Point, Promontory, and the mouth of Columbine Creek. Can be booked one-way, round trip, or for any point-to-point service from the drop off points, as well as to

and from Bridge Bay Marina.

Departs: Bridge Bay Marina

Rates: Drop-off or pick-up \$252, each additional hour over 2 hours \$126, Canoe rental with shuttle service \$60 per night, One day excursion \$378.

Available Dates & Times:

June 14 - August 5 / 8:00 am to 5:00 pm (Last departure is 3:00 pm)

August 6 - Sept. 8 / 9:00 am to 5:00 pm (Last departure is 2:00 pm)

Guided Fishing and/or Sightseeing Charter Boats

Yellowstone Lake is home to gorgeous native Cutthroat Trout and non-native Lake Trout.

Your experienced Captain provides the gear and takes you to places with the best potential for catching fish. If you desire sightseeing only, this is the best way to get further into the remote areas of Yellowstone in a short time frame. Must be booked in 2-hour blocks. Anyone over 16 years or older who intends to fish must purchase a fishing license.

Departs: Bridge Bay Marina

Rates: \$240 per 2-hours (for up to 5 people)

Tour Available: June 14 - Sept. 8

Tour Times: 7:45 am - 8:00 pm (6/14 - 8/5 last departure 5:45 pm), 8:45 am - 6:30 pm (8/6 - 9/8 last departure 4:15 pm).

Must book at the front desk or by calling 307-344-7311.



Bridge Bay Marina Dock Slip Rentals

Enjoy Yellowstone Lake with your own personal boat. Slip rentals available on a nightly, monthly, or seasonal basis. Personal watercraft will need a National Park Service permit and an aquatic invasive species inspection before entering the water.

Available: June 7 - September 8

Rates: Boats up to 40' in length - \$52 per day

WILD WEST ADVENTURE TOURS

The Roosevelt Corral is beside Tower-Roosevelt Junction, please allow ample time to drive to this location. Drive time could be significant depending on your starting location and park traffic.

Saddle Up (Horseback Ride)

Whoa partner! Take the time to "slow down and smell the sagebrush" as you and your horse mosey on the trail in Pleasant Valley. One-hour horseback rides are offered throughout the day, and a two-hour ride is offered in the morning. *To ride a horse a person must be at least 8 years old, 48 inches tall, weigh under 240 lbs, and understand English. Ages 8-17 must be accompanied by an adult 18 years or older.*

Departs: Roosevelt Horse Corral

Rates: One hour ride \$89 (8 years+)

Tour Dates & Times:

June 7 - Aug. 7 / 11:00 am, 12:30 pm, 1:30 pm

Aug. 8 - Sept. 2 / 11:00 am, 12:00 pm, 1:00 pm

Departs: Roosevelt Horse Corral

Rates: Two hour ride \$135 (8 years+)

Tour Available: June 8 - Sept. 2

Tour Time: 9:15 am

Stagecoach Adventure

Energize your pioneer spirit on a stagecoach ride. Feel the rumble of the historic replica Tally-ho coach. Hear about the history of the stagecoaches in Yellowstone.

Departs: Roosevelt Horse Corral

Rates: Adult \$19, Child (3-11) \$10

Tour Available: June 7 - Sept. 2

Tour Time: 10:45 am (starts 6/3), 1:15 pm, 2:15 pm, 3:15 pm (ends 8/7)



Old West Dinner Cookout

Grab the saddles and hitch up the wagon. Enjoy the cookout and an evening you won't soon forget. Travel to the cookout by a one-hour horseback trail ride or by a horse-drawn covered wagon. When you arrive you'll find our cooks dishin' up some real cowboy grub like sizzling steaks, our famous Roosevelt baked beans, potato salad, corn, cole slaw, corn muffins, watermelon, and fruit crisp. It's all served up with music, storytelling, wranglers, horses, and wagons. **Reserve in advance.** *To ride a horse a person must be at least 8 years old, 48 inches tall, weigh under 240 lbs, and understand English.*

Departs: Roosevelt Horse Corral

Travel by one-hour horseback ride -

Rates: Adult \$116, Child (8-11) \$100

Tour Dates & Times:

June 8 - Aug. 7 / 4:15 pm

Aug. 8 - Sept. 2 / 3:15 pm

Travel by covered wagon -

Rates: Adult \$84, Child (3-11) \$65

Tour Dates & Times:

June 8 - Aug. 7 / 4:45 pm

Aug. 8 - Sept. 4 / 3:45 pm

Sept. 5 - Sept. 8 / 2:45 pm



Historic stagecoach touring the valley

Packages

SPRING • SUMMER • FALL

Leave the planning to us! Our packages give you the chance to experience Yellowstone in a whole new way. Packages include knowledgeable Xanterra guides, tours, in-park transportation, luggage transfers, welcome gift, and all meals. All you have to do is sit back and enjoy all the sights, sounds, and wildlife in the park.

Spring Into Yellowstone Package

Spring is one of the most dynamic times of year in Yellowstone. As the park begins to turn green and the days grow longer, the landscape changes almost daily. With this package you'll experience the splendor of the Mammoth Hot Springs Terraces, the excitement of the Northern Range, hot geyser basins, and the grandeur of the Grand Canyon of the Yellowstone.

4 nights

The Total Yellowstone Package

We've bundled up a 5-day boatin', ridin', stagecoachin', park-tourin' extravaganza. It's a lot of park to cover, and we'll do it with an emphasis on fun!

5 nights

Yellowstone Summer Couples Adventure Package

Two's great company on this Adventure Package. You'll enjoy the sun on your face as the Historic Yellow Bus, with its roll-back top, carries you both to amazing in-park wonders. Guided hiking and wildlife-watching round out this adventure.

5 nights

Yellowstone Fall Couples Adventure Package

Fall in love with Yellowstone on this adventure for two. You'll enjoy the cool breezes of fall as you tour the park in a Historic Yellow Bus with its top rolled back. Guided hiking and wildlife-watching round out this adventure.

5 nights



Autumn Adventure Package

Experience the splendor of fall in Yellowstone. The air is crisp and cool, the ground cover shimmers with fall color, elk are bugling, and you can experience the park on a more intimate scale. On this package you'll experience Mammoth Hot Springs Terraces, the Northern Range, geyser basins, and the beautiful Grand Canyon of the Yellowstone.

4 nights

Discover Yellowstone Adventure Package

This package is ideal for those who want to experience all that Yellowstone is known for within a guided small-group itinerary. Based centrally at Canyon Lodge, the four days will offer opportunities for exploration of the Old Faithful area and other geothermal hot spots, a Scenicruise on Yellowstone Lake, an Old West Cookout, and some unparalleled wildlife watching.

4 nights

EXPLORE OUR PACKAGES ONLINE
yellowstonenationalparklodges.com/packages/



YELLOWSTONE
FOREVER

Packages

SPRING • SUMMER • FALL

Our award-winning Lodging & Learning programs combine the renowned expertise of the Yellowstone Forever Institute and our lodging, food, and transportation services.

Minimum age to participate is 12 yrs. old

Spring Wolf and Bear Discovery Package

This is your opportunity to delve into the world of Yellowstone's wolves and bears in the spring. Enjoy sunrise trips in Yellowstone's Northern Range to look for these charismatic carnivores. During the day, you'll take leisurely hikes in their habitat, learning about their behavior, ecology, and conservation.

4 nights

Fall Wolf and Elk Discovery Package

Discover wolves and elk, Yellowstone's marquee predator and prey species. The elk mating season, or rut, spans late summer and fall where we'll take plenty of time to enjoy and discuss the dramatic displays of mating bulls. Wolves are more elusive in fall, but sunrise wildlife watching trips will still give us a better chance of observing wolves in the wild.

4 nights

A Grand Tour of Yellowstone Package

Take the famous and historic Grand Tour of Yellowstone in a similar style as visitors of a bygone era. You'll travel in one of the park's classic historic Yellow Buses, which feature large windows and a retractable canvas top, perfect for wildlife viewing. Your guide will escort you to cultural sites from Yellowstone's past and on walking tours of historic and thermal areas.

5 nights

Essential Yellowstone Package

Explore the hidden secrets and sights of the park. You'll enjoy wildlife watching in Hayden Valley, walk along the rim of the Grand Canyon of the Yellowstone River, take a private boat tour on Yellowstone Lake, and tour the heart of the Yellowstone caldera.

4 nights

Roosevelt Rendezvous Package

Enjoy the fall colors of aspen, willow, and cottonwood in Yellowstone's Northern Range. Here you can choose your daily activities: search for wolves, enjoy an easy geology stroll, challenge yourself on a vigorous guided hike, or do your own thing.

4 nights

Yellowstone for Families Package

Experience the magic of Yellowstone with this unique learning adventure for families with children 8-12 years old. Your family can explore canyons, waterfalls, geyser basins and enjoy activities together including animal tracking, wildlife watching, photography, painting, and hiking.

4 nights

Trails Through Yellowstone Package

Lace up your hiking boots and sling on your daypack for four days of hiking, wildlife viewing, and discovery in the world's first national park. You'll explore Yellowstone's diverse landscapes throughout the park, from the geyser basins around Old Faithful to the Grand Canyon of the Yellowstone River.

4 nights

All Lodging & Learning Packages include:

- Instruction by a Yellowstone Forever Institute naturalist guide
- In-park transportation
- Lodging as indicated
- One welcome gift per adult
- Most meals (Breakfast & Lunch)

EXPLORE OUR PACKAGES ONLINE: yellowstonenationalparklodges.com/packages/

Working in Yellowstone

Finding a job is easy. Finding a job that'll change your perspective, deliver bucket-list caliber experiences, and open doors to an exciting and successful career? That's a different story – one you can write for yourself at Yellowstone National Park. Here are just a few of the many reasons to work in Yellowstone.

MEET INCREDIBLE PEOPLE.

Yellowstone attracts people from all over the world and from all walks of life, so if you love to meet new and interesting people, there's no better place to work! The simple lifestyle, the superb quality of life, and the stunning natural setting attract all kinds of folks, from students to established professionals looking for a career change, to semi-retired people. Yellowstone staffers describe the park as a place to make lifelong friends.

ENJOY CAREER OPPORTUNITIES.

If you love working at Yellowstone, there's no need to say goodbye when the season ends. As part of the Xanterra Travel Collection® family, you'll have plenty of opportunities to grow, travel, and work in Yellowstone or elsewhere within the Xanterra family.

LIVE IN ONE OF THE WORLD'S MOST BEAUTIFUL PLACES.

With 2.2 million acres of gorgeous outdoors to explore, Yellowstone is not your typical office environment. The only traffic jam you're going to experience on the way to work is a herd of elk or bison in the road. If you're a person who appreciates the outdoors and enjoys spending time in nature, there's no better way to mix business with pleasure. Breathtaking geyser basins, plunging waterfalls, serene lakes, rugged trails and canyons: no matter what kind of landscape you love, you'll find it here in the park, and you'll be able to explore and experience it.

IT'S A SIMPLE LIFESTYLE.

With low-cost onsite housing and meal plans, affordable medical services, an affordable recreation program, and discounts from gateway businesses, you can save money and avoid unnecessary hassle. Seldom is there even a need to deal with traffic on the morning commute, as employee housing is typically just a short walk away from the work station. Working at Yellowstone makes life simple.

TRY BUCKET-LIST EXPERIENCES EVERY DAY.

If adventure is what you crave, Yellowstone delivers. Get out of your comfort zone and make memories that last a lifetime. In between work shifts, you'll have access to various activities like horseback riding, boat tours, wildlife viewing tours, hiking, fishing – all for a discount or free! The quality of life and access to activities in Yellowstone is second to none, and there's always something new waiting to be discovered. It's like getting to enjoy a mini-vacation!

WANT TO WORK IN YELLOWSTONE?

With positions in hospitality, food and beverage, guest services, maintenance, transportation, and more, Yellowstone welcomes team members from all over the world who share a passion for the environment and a desire to create unforgettable experiences for guests. Ready for an adventure you'll never forget? Check out current job positions and apply online to join our team at YellowstoneJobs.com.

Visit YellowstoneJobs.com to learn more or follow @YellowstoneJobs on social media to see how our employees live, work, and explore!

LIVE. WORK. EXPLORE.

See Yellowstone Lake on a **SCENICRUISE**



Come aboard the *MV Lake Queen II* for a one-hour guided tour of the largest freshwater lake above 7,000 feet in the United States. Learn about the Lake Area Historic District, the remains of the *SS E. C. Waters* and watch for wildlife on the shoreline.

TAKE A FISHING/SCENIC CHARTER OR RENT A BOAT

Reel in the catch-of-the-day with a guided fishing charter or rent a boat and tour the lake at your own pace.



Book the scenicruise online, call (307) 344-7311, or speak to the front desk for available marina tours, rentals, and charters.

Visiting Yellowstone with Kids



If it's your first time visiting Yellowstone with children, we have a few tips to share that will make your trip easier and more fun for the whole family.

There's going to be a lot of driving, so plan accordingly! Yellowstone is huge, with hundreds of miles of road it can take a couple of hours of driving to get from one attraction to another. There's plenty to look at, from breathtaking scenery to wildlife. Make frequent stops to give kids the chance to walk trails, take pictures, or draw things they see. Encourage kids to keep a journal of their park experience, or pick up books about Yellowstone in the Visitor Center bookstores or park gift shops for them to read during long stretches in the car.

Grab a wildlife checklist. As you enter the park, ask the Ranger at the entrance station for a kids' wildlife checklist and turn your sightseeing into a game! This can also help you pass some of the long hours in the car, too.

Be sure to pack snacks and lunches. With so much space between food service stations, you won't always be able to hop out of the car to grab some trail mix and bottled water. If you have room in your vehicle, fill a cooler with lunches and snacks and enjoy your meals at some of the well-marked picnic spots. Most marked picnic areas have vault toilets. There are plenty of places to buy ice and other supplies. Deli lunches and to-go food can be purchased at the park's restaurants, snack shops, and deli's.

Establish basic safety rules. Kids and some adults have a tendency to want to get as close as they can to animals. Of course, when those animals are wild, this isn't a safe option. Make sure you and your kids keep a safe distance from animals you spot during your exploration. National Park Service rules require staying at least 25 yards from most animals (elk, bison, moose, coyotes,

etc) and 100 yards from bears and wolves. A good rule for your kids is to stay on the boardwalks and not run ahead – everybody sticks together!

Remember that you're going off the grid. In Yellowstone, there's no TV, radio, and limited Wi-Fi and cell service, so kids should be prepared for what will likely be a drastic change from their everyday lives. But there are plenty of ways to keep busy! Kids can use their smartphones or tablets in different ways, such as taking photos, creating photo collage souvenirs, or collecting video clips to make a movie of their adventure. In the evenings, you can play board games in the lobbies of historic lodges like the Mammoth Hotel, Old Faithful Inn, and Lake Lodge, or attend the evening Ranger programs, most of which are free.



Check out the Junior Ranger program. Designed for kids ages 4 and up, the self-guided Junior Ranger Program is a great way to introduce kids to the natural wonders of Yellowstone. Booklets are available at park visitor centers. After completing activities in the booklet, kids review their work with a ranger at any visitor center.

Participants are awarded a wooden official Yellowstone Junior Ranger badge.

Give the Young Scientist Program a try! Get a self-guided program booklet at the Canyon Visitor Education Center (ages 10+) or at the Old Faithful Visitor Education Center (ages 5+). While you're in the Old Faithful area look for a Young Scientist Toolkit with the gear you need to explore the young scientist program.

If your kids are 3 or younger, bring a stroller. Little legs get tired quickly, and with so much ground to cover, you might not make it very far down the trail before you hear, "I'm tiiiiiiiiired!" Err on the side of caution and bring a stroller along.

Wake up to
WILDLIFE
or make it an evening adventure

Morning, evening, or all day, we have a wildlife watching tour for you! Half day tours depart from Mammoth Hotel, Roosevelt, and Canyon.

YELLOWSTONE IN A DAY is a full day tour departing from Old Faithful Inn or Mammoth Hotel.

Book online, call (307) 344-7311, or speak to the front desk for tour options, dates, and times.

www.yellowstonenationalparklodges.com/adventures

Wildlife Watching Secrets

Yellowstone National Park is a place of natural wonders and geothermal phenomena, with an abundance of diverse, free-roaming wildlife. Wolves, bison, bears, otters, bald eagles, deer, elk, moose, ravens, foxes, and more call the park home. Each year these animals captivate park visitors from around the world. Here are a few secrets for successful wildlife watching:

EARLY BIRDS AND NIGHT OWLS CATCH THE WORMS

Yellowstone's wildlife is most active in the early morning and evenings, away from the heat of the day. This is also the time when most park visitors have yet to arrive, or have retired for the evening.

LISTEN, DON'T JUST LOOK

Take the time to listen to the natural sounds around you- this can help with spotting wildlife. You may hear the call of an animal, birds chirping, and other noises that could tip you off to an animal being nearby.

GO WHERE THE WILDLIFE IS

Yellowstone's huge, wide valleys make excellent habitats for wildlife. Your best chance to spot bison, pronghorn, (maybe bears and wolves) and other species is to head to Lamar Valley in Yellowstone's Northern Range. Hayden Valley is another prime spot, especially for bison in the late summer during their mating season, or "rut." Mammoth Hot Springs typically has elk in the area year-round.

DON'T FEED THE WILDLIFE & MAINTAIN A SAFE DISTANCE

Do not feed any animals, even birds and squirrels. Consuming human food is unhealthy for wildlife. Once an animal associates humans with food, the animal can exhibit aggressive behavior in its attempts to find more. Store food in the car or hard-sided camper when not eating or attending to it. **Always make sure you keep at least 100 yards (91 m) between you and bears and wolves. Stay 25 yards (23 m) away from all other animals.** If the animal moves closer to you—back away and give them space. Do not surround, crowd, or disrupt an animal's path of movement. If your activity causes the animal to change its ongoing behavior, whether the animal is eating, resting, standing still, etc., stop what you're doing and move away. The goal of wildlife viewing is to observe animals without interrupting their normal activities and to avoid giving the animal the sense that they are in danger.

Thermal Features

HIKING AROUND THE PARK AND THERMAL FEATURES

We invite you to spend some time hiking the area's scenic trails. There are numerous trails suitable for day hiking. Begin your hike by stopping at a Ranger Station or Visitor Center for information. Trail conditions may change suddenly and unexpectedly. Bear activity, rain or snow storms, high water, and fires may temporarily close trails. At a minimum, carry water, a raincoat or poncho, a warm hat, insect repellent, sunscreen, and a first aid kit. It is recommended that you hike with a party size of three or more, and carry bear spray. No permit is required for day hiking.

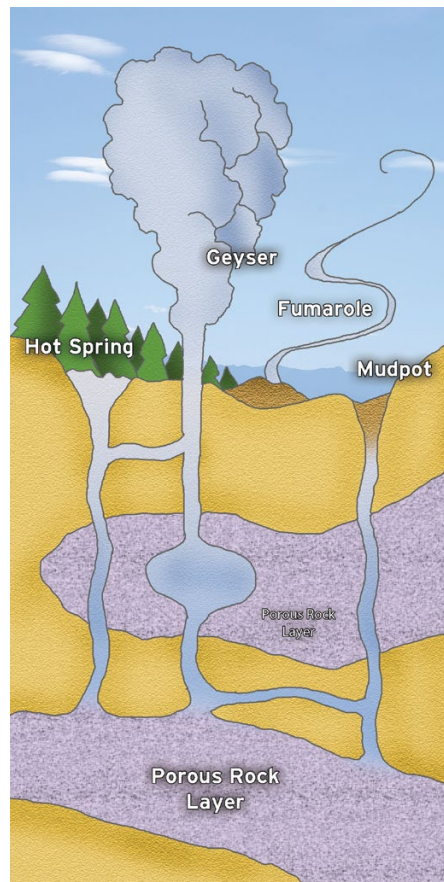
FOUR TYPES OF THERMAL FEATURES

GEYSER

A geyser is a hot spring with the intriguing habit of tossing underground water in the air. It's the equivalent of a giant pressure cooker. Even though the temperature of water deep down may be well above boiling, the weight and pressure of the water above prevents that boiling from happening. Eventually, though, the pressure builds enough to push the water in the upper reaches up and out, causing an overflow. That overflow, in turn, relieves the pressure on the super-heated water below, causing it to flash into steam. That flash, that explosion through a narrow, constricted place in the rocks, is what sends water shooting into the air.

MUDPOT

Mudpots occur in places where microorganisms help convert hydrogen sulfide, which rises from deep within the earth, into sulfuric acid. The acid dissolves surrounding rock into clay, which mixes with rising steam and groundwater to form mud of varying colors and consistencies.



HOT SPRINGS

Hot springs are similar to geysers, but they have no constrictions in their plumbing. Convection prevents water from reaching the temperature needed to set off the chain reaction leading to an eruption. The many beautiful colors you see in hot springs are caused by light refraction, suspended mineral particles, and heat-loving microorganisms.

FUMAROLE

Also called a steam vent, in simplest terms a fumarole is a vent in the Earth's crust. Modest amounts of groundwater come into contact with hot rocks underground and are turned to steam. This steam rushes up through a series of cracks and fissures and out the vent, sometimes with enough force to create a loud hiss or roar.

Photography Tips

Packed with stunning scenery, captivating wildlife, and incredible natural wonders, Yellowstone National Park is a dream destination for both professional and amateur photographers. No matter which part of the park you're touring, photo ops are around every corner. Put your camera to good use during your vacation with these helpful photography tricks.

GET AN EARLY START & REMEMBER THE "GOLDEN HOUR"

If you're hoping to capture some wildlife for your photo album, getting an early morning start is key (one of the reasons our Photo Safaris set out so early in the morning!). Animals are most active early in the day, and the morning light can be spectacular, so skip sleeping in and head out shortly after dawn for your best chance of snapping some great wildlife shots. As the sun gets low in the sky at the end of the day, the park will be bathed in a warm, golden glow and the sky appears more saturated with color. Photographers call this the "golden hour" and there's a reason it's a preferred time of day for shooting everything from portraits to landscapes.

EXPERIMENT WITH FRAMING SUBJECTS IN DIFFERENT WAYS

Remember the "rule of thirds" – rather than centering your subject in the middle of a photo, try placing them slightly off-center for a different, more interesting perspective.

KEEP YOUR BACK TO THE SUN IF PHOTOGRAPHING PEOPLE

This will help you to avoid situations where your subjects are dark silhouettes against a bright background. Try to shoot so that people are lit from the side to minimize squinting into direct sunlight.

MIX IN SOME BLACK-AND-WHITE SHOTS

Sure, Yellowstone's landscape is packed with vibrant colors, but sometimes a black-and-white photo can have a dramatic, artistic effect. Try mixing some monochromatic photos into your collection.

An advertisement for a 'Photo Safari' tour. The background is a scenic landscape of a valley with a river. In the foreground, a smartphone is mounted on a tripod, displaying the same landscape on its screen. The text 'Take a PHOTO SAFARI' is written in a large, bold, yellow font. Below this, a white box contains the following text: 'Let our knowledgeable guides take you on a PICTURE PERFECT PHOTO SAFARI TOUR for photos you'll want to frame. Daily morning trips from Lake Yellowstone Hotel or Old Faithful Inn are available all summer. Book online, call (307) 344-7311 or speak to the front desk for tour dates and times. www.yellowstonenationalparklodges.com/adventures'.

Our Favorite Hikes

GRANT VILLAGE AREA

West Thumb Overlook Trail

For a great view of Yellowstone Lake and the Absaroka Mountain Range, hike the West Thumb Overlook Trail. This two-mile trail starts at the west end of the West Thumb parking lot, crosses the South Entrance Road and climbs about 400 feet through meadows and forest.

MAMMOTH HOT SPRINGS/TOWER AREA

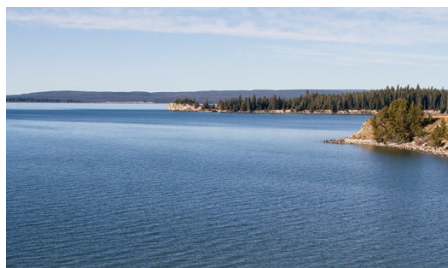
Wraith Falls

This is a short, easy, one-mile hike through open sagebrush and fir forest to the foot of the 100-foot Wraith Falls on Lupine Creek. The trail begins at the pull-off 1/4 mile east of the Lava Creek Picnic Area on the Mammoth-Tower road, about 5 miles east of Mammoth Hot Springs.

YELLOWSTONE LAKE AREA

Elephant Back Trail

Enjoy this hike through a dense lodgepole pine forest to a sweeping panoramic view of Yellowstone Lake and the surrounding area. This moderately strenuous trail is a 3-mile loop starting one mile south of the Fishing Bridge Junction. This is a staff favorite!



Storm Point Trail

This is an easy hike to the scenic, windswept Storm Point. The 3-mile trail starts at the Indian Pond turnout three miles east of the Fishing Bridge Visitor Center and passes through an open meadow, a forested area, and then takes you along the lake shore. Look for the colony of yellow-bellied marmots that make their home near the rocky point.

OLD FAITHFUL AREA

Lone Star Geyser Trail

Hike or bike along the Firehole River to this cone geyser which erupts for 30 minutes about every 3 hours. Bring a box lunch and spend some quality time in this lovely area. This is an easy, 4.8-mile round-trip trail. Trail head is just south of Kepler Cascades parking area.

Observation Point

Take the boardwalk across the Firehole River and follow the signs up the hill. You'll have a bird's-eye view of the geyser basin and a front row seat for Old Faithfuls' eruption. This is a steep 1-mile round-trip hike, but worth the effort.



ROOSEVELT AREA

Slough Creek Trail

This scenic trail leads to a favorite area for catch and release anglers. The trail follows a historic wagon trail up Slough Creek through several meadows and over Plateau and Elk Tongue Creeks. This trail is moderately strenuous for the first 1.5 miles, then it is easy and takes one to three hours each way. Trail head begins at the Slough Creek Campground (about 9 miles east of Roosevelt Lodge).



For trail conditions, bear closure areas and other important information we recommend checking with a National Park Service Visitor Center before hiking in Yellowstone.



Yellowstone Pledge

"I pledge to protect Yellowstone National Park. I will act responsibly and safely, set a good example for others, and share my love of the park and all the things that make it special."

Top Tips to Put the Pledge into Action:

- **Give wildlife room, use a zoom.** The safest way to view wildlife is through a telephoto lens, a spotting scope, or a pair of binoculars. Park animals are wild and dangerous. Bison, bears, and elk have injured and killed people. Do not approach, encircle, follow, or feed any animal. Stay 100 yards (91 m) from bears and wolves. Stay 25 yards (23 m) from all other animals.
- **Follow the beaten path.** In thermal areas, boardwalks take you to amazing places, protect the park, and keep you safe. People have been severely burned and killed after leaving the boardwalk or reaching into hot water. Geysers, mud pots, and hot springs are delicate. Don't throw anything into any hydrothermal features, touch them, or change them in any way.
- **Be bear aware.** Carry bear spray and know how to use it. Be alert, make noise, hike in groups, and stay on trails. If you encounter a bear, never run.
- **Watch out for water.** Use caution around rivers, lakes, and streams. They are cold and fast and people have died from hypothermia and drowning after accidentally falling into frigid water.
- **Practice safe selfies.** No picture is worth hurting yourself, others, or the park. Be aware of your surroundings whether near wildlife, thermal areas, roads, or steep cliffs.
- **Enjoy the ride.** Drive defensively and cautiously. This park has hazards on the road you aren't used to at home (like 2,000-lb. bison). Follow speed limits and stay with your car if you're stuck in a wildlife jam. When you want to take a photo or look around, use pullouts to avoid blocking traffic and damaging vegetation. Turn off your vehicle when stopped in a traffic line.
- **Leave your drone at home.** Drones are not allowed in Yellowstone National Park. They disturb wildlife, interfere with park operations, and bother people trying to enjoy natural sounds.
- **Clean, Drain, Dry.** Help us prevent the spread of aquatic invasive species. Clean, drain, and dry your watercraft and fishing gear before you come into the park or move from one body of water to another.
- **Stash your trash.** Recycle what you can and put the rest in bear-resistant trash cans so animals can't get to it. If a can happens to be full, find another.
- **Leave what you find.** Don't take antlers, artifacts, rocks, plants, or other objects from the park.

Take the pledge. Tell a friend. Protect the park.



Be Prepared for Bear Encounters

Safety for Bears, Safety for People

- Be alert
- Make noise
- Carry bear spray
- Hike with 3+ people
- Do not run

Bear Spray Works, Know How to Use It



go.nps.gov/bearsafe

Winter Adventure Tours

SNOWCOACH TOURS

ACROSS THE GREAT DIVIDE

Traversing Craig Pass, we'll cross the Continental Divide on our way to Yellowstone Lake, where we'll explore the West Thumb Geyser Basin, taking in such notable features as Abyss Pool, Black Pool, Fishing Cone, and Lakeshore Geyser.

Departs: Old Faithful Snow Lodge*

FIREHOLE BASIN ADVENTURE

Spend a few hours around the Firehole River. Discover the unique nature of this area, home to steam-enshrouded thermal features and wildlife who benefit from the thermal influence.

Departs: Old Faithful Snow Lodge*

MADISON WILDLIFE EXCURSION

The 7-mile corridor that parallels the Madison River west of Madison Junction will be the focal point of this search for wildlife in their winter habitat.

Departs: Old Faithful Snow Lodge*

WINTER PHOTO SAFARI

This photo tour travels by snowcoach seeking the best possible scenic and wildlife photographic opportunities. The guide will determine the best route based on current conditions as they relate to photography. Lunch is included.

Departs: Old Faithful Snow Lodge*

STEAM, STARS & SOUNDSCAPES

Yellowstone does not go to sleep when the sun goes down, in fact, much of it is just waking up. Join us in an adventure that will stimulate all of your senses.

Departs: Old Faithful Snow Lodge*

For more information on winter adventures and to book online scan the QR code.



GRAND CANYON DAY TOUR

Travel through meadows and pine forests, that often provide prime wildlife viewing opportunities on our way to the Grand Canyon of the Yellowstone. Stops will be made to view the Upper and Lower Falls. Lunch is included.

Departs: Mammoth Hot Springs Hotel and Old Faithful Snow Lodge*

WAKE UP TO WILDLIFE TOUR

Come with us on a morning winter wildlife safari! The Northern Range is excellent winter habitat for wildlife. Lamar Valley and an area called Little America are home to bison, elk, coyote, wolves, eagles, bighorn, and many other smaller but no less interesting creatures. A muffin and juice are provided.

Departs: Mammoth Hot Springs Hotel

NORRIS GEYSER BASIN TOUR

Norris Geyser Basin has been a well kept winter secret. Seen in the winter by very few people, you can be one of the few that enjoy the influence of winter's magic in this special place.

Departs: Mammoth Hot Springs Hotel

**Additional snowcoach transportation is required to travel to Old Faithful Snow Lodge in the winter.*



Cross-Country Ski & Snowshoe

Yellowstone offers miles of trails for all abilities that lead past frosty woods, steaming hot springs, and snow covered meadows. Go gliding within sight of a bison herd or striding near elk tracks. Both beginners and advanced skiers will find trails to suit their needs. For information on tours, rentals, and trails, visit the Bear Den Ski Shops at Mammoth Hotel and Old Faithful Snow Lodge.

Scan the QR code for more tour information and to book online, or call our reservations department at 307-344-7311.



SKI AND SNOWSHOE TOURS

Grand Canyon of the Yellowstone Ski Tour

Enjoy a special day of ski touring at the Grand Canyon of the Yellowstone. Travel by snowcoach with experienced guides to trails along the canyon rim to view the frozen Upper and Lower Falls. Lunch is included.

Departs: Old Faithful Snow Lodge* and Mammoth Hotel

Grand Canyon of the Yellowstone Snowshoe Tour

On this full day adventure you will spend up to 2 hours at the Grand Canyon of the Yellowstone and snowshoe up to 3 miles. The trails around the canyon offer stunning views of the canyon and area waterfalls. Lunch is included.

Departs: Old Faithful Snow Lodge*

Old Faithful Area Snowshoe Tour

Snowshoeing is fun and easy to learn. This highly interpretive tour lasts up to 3 hours and takes you off into the backcountry of Yellowstone along the Firehole River.

Departs: Old Faithful Snow Lodge*

Tower Ski Tour

Join our experienced guide as we travel through the Blacktail Plateau to the Tower area for an afternoon of skiing and wildlife spotting.

Departs: Mammoth Hot Springs Hotel

Lone Star Excursion (Ski or Snowshoe)

Follow the beautiful Firehole River on skis or snowshoes on this five mile round-trip adventure to Lone Star Geyser. The beautiful tree-lined trail offers great views of the Firehole River and snow covered meadows.

Departs: Old Faithful Snow Lodge*



CUSTOM GUIDED SKI TOURS

Our custom trips can accommodate all experience levels and skiing backgrounds. Whether you're a seasoned cross-country skier looking to discover some of those off-the-beaten-path trails or trying out cross country skiing for the first time, a custom ski tour with our guides will help show you the wonder that is winter in Yellowstone. Custom tours need to be arranged in advance with our ski shop staff.

SKI SHUTTLES

We offer ski shuttles (for a fee) in the Old Faithful and Mammoth areas that drop you off at the popular ski locations of Indian Creek, Bunsen Peak, the Divide, and Fairy Falls. Shuttles depart on select days from Mammoth and daily from Old Faithful Snow Lodge* and should be reserved online in advance.

RENTALS & LESSONS

Our Bear Den Ski Shops at Mammoth Hot Springs and Old Faithful Snow Lodge have expert staff that can help you with ski and snowshoe rentals, lessons (both group and private), ski repairs/waxings, guided tours, and ski trail info.

SKI AND SNOWSHOE TRAILS

Yellowstone offers a variety of enjoyable and challenging trails for cross-country skiers. A number of trails in the park are groomed for classic stride as well as skate skiing. All trails are marked but may be untracked.

The Old Faithful* area (elev. 7,350 ft.) offers about 70 miles of cross country ski trails, beginning right out the front door of your lodge. Many of these trails provide access to the unique thermal features in the area where bison, elk and other animals take advantage of the warm ground.

Stop at the Bear Den ski shop at Mammoth Hotel or Old Faithful Snow Lodge to discuss the details of your trip. Our staff will be happy to provide current information on weather, trail, snow conditions, and alert you to any special winter hazards. You can also call 307-344-5699 for a recorded ski trail conditions report for the Mammoth area.

*Additional snowcoach transportation is required to travel to Old Faithful Snow Lodge in the winter.

Over 150 miles of groomed and ungroomed trails.

Winter in Wonderland is a cross-country skier's dream come true.





**YELLOWSTONE
FOREVER**

Winter Packages

Our award-winning Lodging & Learning programs combine the renowned expertise of the Yellowstone Forever Institute and our lodging, food, and transportation services.

Minimum age to participate is 12 yrs. old



OLD FAITHFUL WINTER EXPEDITION

From your cozy hotel, venture into the heart of Yellowstone's winter wilderness to experience remote and spectacular winter gems. Stops include the Grand Canyon of the Yellowstone and Yellowstone Lake in search of wildlife, steaming thermal features, pristine winter views, and the true sense of winter wilderness.

Dates Available:

December 15, 2024 - February 25, 2025

Package Details:

2 nights at Mammoth Hot Springs
3 nights at Old Faithful Snow Lodge
5 breakfasts, 4 lunches, and 5 dinners
Snowshoe rental



WINTER WOLF DISCOVERY

Join a Yellowstone Forever Institute instructor for an experience into the beautiful landscape of Lamar Valley, where Yellowstone's wolves are often spotted. This is your best chance to see and learn about these magnificent creatures in their natural habitat

Dates Available:

December 15, 2024 - February 26, 2025

Package Details:

4 nights at Mammoth Hot Springs
4 breakfasts, 3 lunches, and 1 dinner

All Lodging & Learning Packages include:

- Instruction by a Yellowstone Forever Institute naturalist guide
- In-park transportation
- Lodging as indicated in package details
- One welcome gift per adult
- Unlimited ice skate rental and ice skating
- One Snow Card discount card per adult good for an additional 10% discount on select gift shop items, added tours, ski and snowshoe rentals, and some meals (except designated special events)

EXPLORE OUR PACKAGES ONLINE: yellowstonenationalparklodges.com/packages

COUPLES WINTER ADVENTURE PACKAGE

YELLOWSTONE
NATIONAL PARK LODGES
XANTERRA TRAVEL COLLECTION®

This adventure package includes a knowledgeable Xanterra guide, lodging, all meals, baggage handling, transportation, and more.

This five-night guided package takes visitors on a winter excursion into the heart of Yellowstone to experience the geyser basins, the Grand Canyon of the Yellowstone and its magnificent waterfalls, the backcountry hush of winter wilderness, and even a nighttime tour.

Dates Available: December 15, 2024 - February 25, 2025, Not available during holidays

Package Details:

- 3 nights at Mammoth Hot Springs
- 2 nights at Old Faithful Snow Lodge
- All meals
- Round trip snowcoach transportation from Mammoth to Old Faithful Snow Lodge
- Welcome gift
- Snowshoe rental
- Baggage handling
- Interpretive adventure guide
- Snowshoe rental

EXPLORE OUR PACKAGES ONLINE: yellowstonenationalparklodges.com/packages

FROSTY FUN SPECIAL (SELF-GUIDED)

This special offer is built around value and convenience allowing you to discover all that Yellowstone in winter has to offer on your own pace. Must book a minimum of two nights lodging at Mammoth Hot Springs Hotel or Old Faithful Snow Lodge*.

Dates Available:

December 15, 2024 - December 22, 2024 / January 1, 2025 - March 3, 2025

Package Details:

- One breakfast per person, per night booked
- One welcome gift per adult
- Unlimited ice skate rental and ice skating
- One Snow Card discount card offering 10% discounts on select gift shop items, tours, rentals & meals (except special events)

**Additional snowcoach transportation is required to reach Old Faithful Snow Lodge in the winter.*



Winter in Wonderland means miles of cross-country ski trails and the opportunity to see animals in a beautiful frosty environment.

Go online to find more information about Yellowstone in winter.

www.yellowstonenationalparklodges.com/winter

Winter Lodging, Dining & Transportation

LODGING

Old Faithful Snow Lodge

December 16, 2024 - March 2, 2025

From this snowy haven sitting at approximately 7,350 feet, you can set out on a variety of explorations, either on your own or with one of our knowledgeable guides. **Over-snow transportation is required to access the Snow Lodge.**

Mammoth Hot Springs Hotel

December 15, 2024 - March 3, 2025

Mammoth Hotel was recently renovated making it a perfect base for exploring the wildlife, skiing, snowshoeing and sensational scenery of Yellowstone's Northern Range.



TRAVEL TO SNOW LODGE

Snowcoach Transportation

Our regularly scheduled snowcoach service between Mammoth and Old Faithful is more than just a ride. Each leg of the trip is also an interpretive tour, providing some limited opportunities to stop along the way. Snowcoach transportation is mandatory to get to Snow Lodge in the winter.

AIRPORT SHUTTLE

We offer a daily shuttle that allows guests to avoid renting a vehicle while our experienced drivers handle the winter roads. The shuttle will operate daily with stops at Mammoth Hot Springs, a designated Bozeman hotel, and the Bozeman Airport. Book online or by calling 307-344-7311.

DINING

Obsidian Dining Room at Snow Lodge

Dec. 16, 2024 - Mar. 2, 2025 • Breakfast, Lunch, Dinner

Buffet style breakfast and à la carte menu are available in the morning. Make dinner WILD with a selection of game dishes like bison, boar, and duck. **Dinner reservations are required and can be made at the host desk or by calling 307-545-4998.**

Firehole Lounge at Snow Lodge

Dec. 16, 2024 - Mar. 1, 2025 • Drinks, Appetizers

Serving local beers, signature cocktails, and appetizers. Look for the bears hidden in the stones of the fireplace!

Geyser Grill at Snow Lodge

Dec. 15, 2024 - Mar. 15, 2025 • Lunch, Dinner

Need a quick bite before heading back out to Old Faithful? The Geyser Grill offers quick-service classic American fare.

Mammoth Hot Springs Hotel Dining Room

Dec. 15, 2024 - Mar. 3, 2025 • Breakfast, Lunch, Dinner

This restaurant sets a high standard for sustainable operations by being the first restaurant in the National Park Service to achieve 4-Star certification from the Green Restaurant Association. Buffet style breakfast and à la carte menu are available in the morning. Dinner features a mixed menu with steaks, chicken, fish, and pasta. **Dinner reservations are required and can be made at the host desk or by calling 307-344-5314.**

Map Room Bar

Dec. 15, 2024 - Mar. 3, 2025

The corner bar in the Mammoth Map Room serves coffee and alcoholic beverages with live piano music most evenings.

SHOPPING/SKI SHOP

Bear Den Gift Shop / Ski Shop

The Bear Den Gift Shop & Ski Shop at both Mammoth Hot Springs and Old Faithful Snow Lodge offers a wide selection of apparel, toys, souvenirs, snacks, and beverages. This is also a one-stop-shop for all your ski and snowshoeing needs including rentals, tours, and lessons.

Winter in Yellowstone



Yellowstone is spectacular in winter. Blanketed by snow, the 2.2 million acre park exudes a mythical beauty. Here's 9 reasons why it's worth bundling up to visit the park in winter.

1 WINTER WILDLIFE

More than 45 species are on the move in winter, and the snow makes it even easier to spot them.

2 SPECTACULAR SKIING

With more than 100 miles of scenic cross-country ski trails, the park is a paradise for both novice and experienced skiers.

3 BREATHTAKING GEYSERS

Check out more than 60 geysers and geothermal features, which are often even more awe-inspiring in the winter.

4 EMBRACE HYGGE

Get cozy by the fireplace, curl up with a book, enjoy a cup of hot cocoa, or play a board game. There are lots of ways to hygge by embracing the feeling of coziness in winter.

5 TRAVEL BY SNOWCOACH

Climb aboard this one-of-a-kind vehicle that's specially equipped to navigate Yellowstone's groomed oversnow roads with oversized low pressure tires.

6 GET ACTIVE

In addition to skiing, you can also try snowshoeing or ice skating during the winter. There are plenty of ways to enjoy the fresh air!

7 SAVOR PEACE AND QUIET

We all need to recharge sometimes, and Yellowstone's peaceful surroundings and snow-covered landscapes create the perfect place to unwind.

8 SNAP A PICTURE- PERFECT SHOT

Join a Winter Photo Safari to learn how to take stunning, frame-worthy photos or simply snap some wintry shots as you explore.

9 SEE WINTER WONDERS

Diamond dust, sundogs, rime ice, frosty waterfalls, ghost trees, hoar frost... winter in Yellowstone means a host of incredible natural phenomena you can't see during the warmer months.



YELLOWSTONE

NATIONAL PARK LODGES

XANTERRA TRAVEL COLLECTION®

EXPERIENCE PLANNER

*Winter
'24/'25*



**A winter guide to lodging, camping, dining,
shopping, and tours in Yellowstone National Park**



**Authorized
Concessioner**